



Digital Signage Solution

HARDWARE

General Specification

Customize available. It's on your choice!



Windows

CPU Intel Core i3/i5/i7

RAM 4/8/16 GB

Storage SSD 128/256/512 GB

OS Windows10



Android

CPU Rk3288 cortex-A17 1.8GHz

RAM 2/4/8/16 GB

Storage 4/8/16 GB

OS Android 7.1



Touch

IR Sensor

P-CAP

10Point Multi touch



HARDWARE A

Payment

#Printer #Qrcode #Paymentkiosk #Cardreader



LCD

- **Model** LG LD320DUE-FHB1
- **Brightness** 400cd/m²
- **Contrast Ratio** 1100:1
- **Aspect Ratio** 16:9
- **Resolution** 1920x1080(FHD)

KIOSK

- **Dimension** 538x1773x550mm
- **Material** EGI, Safety tempered glass, Acrylic
- **Operating temperature** 0~40°C
- **Input** 100-240V(50Hz-60Hz)
- **Power consumption** 500W
- **Network** WIFI, RJ45
- **Interface** USB 2.0 x 2
- **SMPS Power** MP118FL-T 50Hz/60Hz
- **Print** HMK-072
- **QR Scanner** SYMBOL DS9208
- **Card reader** ed-977

Picture



#Printer #Qrcode #Camera #Paymentkiosk #Cardreader



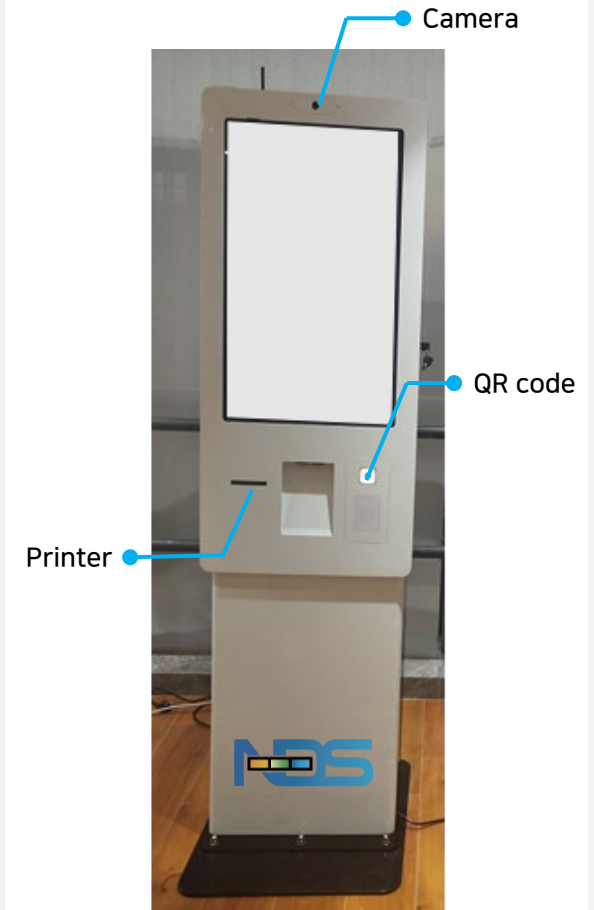
LCD

- **Model** LG
- **Brightness** 300cd/m²
- **Contrast Ratio** 3000:1
- **Aspect Ratio** 16:9
- **Resolution** 1920x1080(FHD)

KIOSK

- **Dimension** 1834x600x550mm
- **Material** EGI, Safety tempered glass
- **Operating temperature** 0~40°C
- **Input** 100~240V(50Hz-60Hz)
- **Power consumption** 40W
- **Network** WIFI, RJ45
- **Interface** USB 2.0
- **Print** Thermal printer 80*150mm
- **QR Scanner** 2D barcode scanner
- **Camera** 2million pixels

Picture



#Printer #Qrcode #Paymentkiosk #Cardreader



LCD

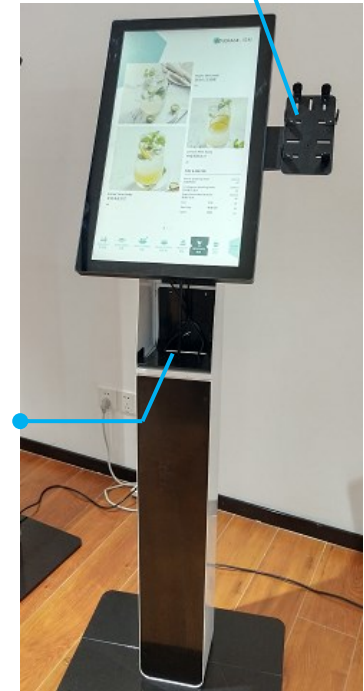
- **Model** LG
- **Brightness** 300cd/m²
- **Contrast Ratio** 3000:1
- **Aspect Ratio** 16:9
- **Resolution** 1920x1080(FHD)

KIOSK

- **Dimension** 1520x310x350mm
- **Material** EGI, Safety tempered glass, Acrylic
- **Operating temperature** 0~40°C
- **Input** 100~240V(50Hz-60Hz)
- **Power consumption** 50W
- **Network** WIFI, RJ45
- **Interface** USB 2.0 x 2
- **Print** Thermal printer 80*150mm
- **QR Scanner** 2D barcode scanner
- **Card reader** Ed-977

Picture

Card Reader



Printer

#Printer #Qrcode #Camera #Paymentkiosk #Cardreader



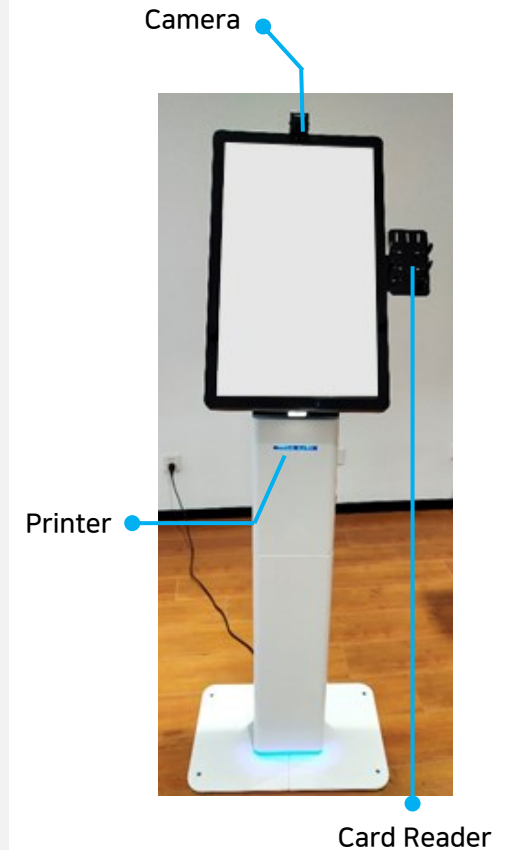
LCD

- | | |
|-------------------------|----------------------|
| ▪ Model | LG |
| ▪ Brightness | 300cd/m ² |
| ▪ Contrast Ratio | 3000:1 |
| ▪ Aspect Ratio | 16:9 |
| ▪ Resolution | 1920x1080(FHD) |

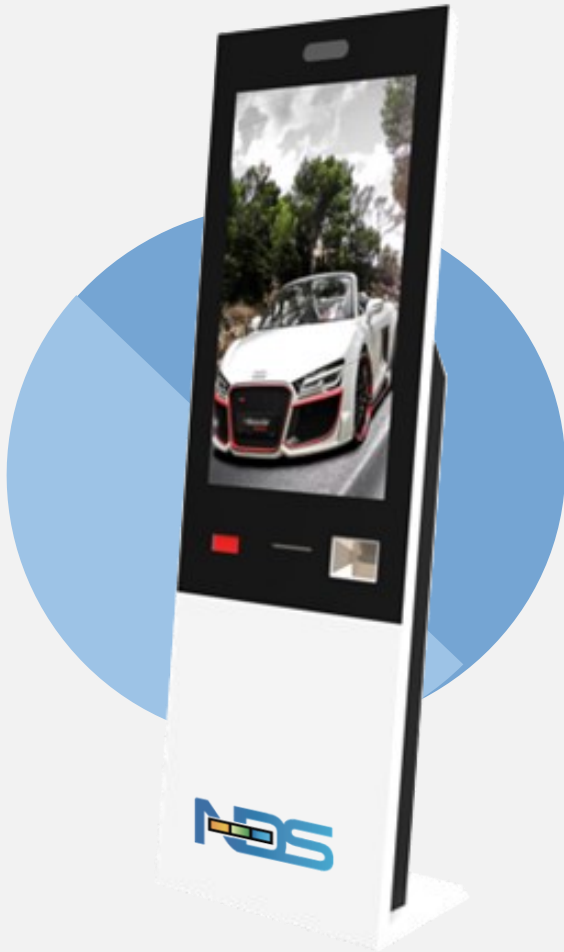
KIOSK

- | | |
|--------------------------------|-------------------------------------|
| ▪ Dimension | 910x430x250mm |
| ▪ Material | EGL, Safety tempered glass, Acrylic |
| ▪ Operating temperature | 0~40°C |
| ▪ Input | 100~240V(50Hz-60Hz) |
| ▪ Power consumption | 40W |
| ▪ Network | WIFI, RJ45 |
| ▪ Interface | USB 2.0 x 2 |
| ▪ Print | Thermal printer 80*150mm |
| ▪ QR Scanner | 2D barcode scanner |
| ▪ Card reader | Ed-977 |

Picture



#Printer #Qrcode #Camera #Paymentkiosk



LCD

- **Model** LG
- **Brightness** 400cd/m²
- **Contrast Ratio** 1100:1
- **Aspect Ratio** 16:9
- **Resolution** 1920x1080(FHD)

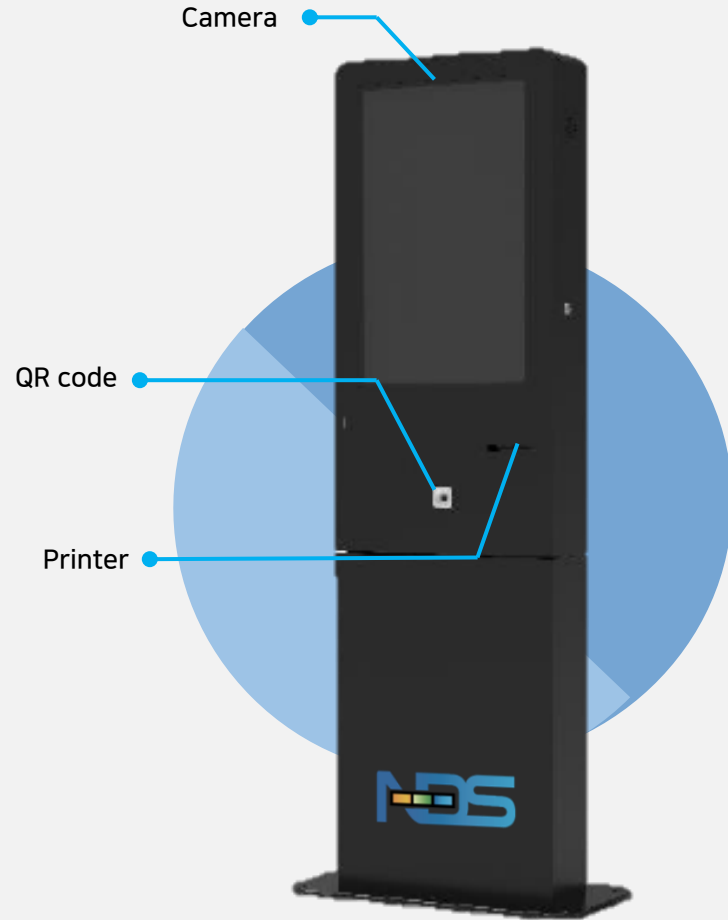
KIOSK

- **Dimension** 503x1530x500mm
- **Material** EGI, Safety tempered glass, Acrylic
- **Operating temperature** 0~40°C
- **Input** 100-240V(50Hz-60Hz)
- **Power consumption** 500W
- **Network** WIFI, RJ45
- **Interface** USB 2.0 x 2
- **SMPS Power** MP118FL-T 50Hz/60Hz
- **Print** Line thermal printing 80mm
- **QR Scanner** VP8415-JX
- **Camera** 2million pixels 1080 30FPS

Picture



#Printer #QRcode #Paymentkiosk



LCD

▪ Model	LG
▪ Brightness	300cd/m ²
▪ Contrast Ratio	3000:1
▪ Aspect Ratio	16:9
▪ Resolution	1920x1080(FHD)

KIOSK

▪ Dimension	1700x450x140mm
▪ Material	EGI, Safety tempered glass
▪ Operating temperature	0~40°C
▪ Input	100-240V(50Hz-60Hz)
▪ Power consumption	40W
▪ Network	WIFI, RJ45
▪ Interface	USB 2.0
▪ Print	Thermal printer 80*150mm
▪ QR Scanner	2D barcode scanner

#Printer #QRcode #Paymentkiosk #FaceRecognition #BarcodeReader #NFCReader



LCD

▪ Model	21.5" LED
▪ Brightness	300cd/m ²
▪ Contrast Ratio	3000:1
▪ Aspect Ratio	16:9
▪ Resolution	1080x1920(FHD)

KIOSK

▪ Dimension	Desk - 340(W) x 265(D) x 791(H) Stand - 390(W) x 450(D) x 1595(H)
▪ Material	EGI, Safety tempered glass
▪ Operating temperature	0~40°C
▪ Input	100~240V(50Hz~60Hz)
▪ Power consumption	40W
▪ Network	WIFI, RJ45
▪ Interface	USB 2.0
▪ Card reader	IC/MSR
▪ Print	3Inch Thermal
▪ QR Scanner	2D barcode scanner
▪ Memory/SSD	DDR4 4GB / 64GB SSD
▪ CPU	Intel® Celeron Quad-Core Jasper Lake (Option : i3 / i5)
▪ Option	Camera / NFC Reader / Barcode Reader
▪ Weight	Desk : 21kg / Stand : 44kg

#Printer #QRcode #Paymentkiosk #FaceRecognition #BarcodeReader #NFCReader

Camera



Printer

Card reader

QR code



LCD

▪ Model	32" LED
▪ Brightness	300cd/m ²
▪ Contrast Ratio	3000:1
▪ Aspect Ratio	16:9
▪ Resolution	1080x1920(FHD)

KIOSK

▪ Dimension	485(W) x 420(D) x 1042(H) Without Basement : 170(D)
▪ Material	EGI, Safety tempered glass
▪ Operating temperature	0~40°C
▪ Input	100-240V(50Hz-60Hz)
▪ Power consumption	40W
▪ Network	WIFI, RJ45
▪ Interface	USB 2.0
▪ Card reader	IC/MSR
▪ Print	3Inch Thermal
▪ QR Scanner	2D barcode scanner
▪ Memory/SSD	DDR4 4GB / 64GB SSD
▪ CPU	Intel® Celeron Quad-Core Jasper Lake (Option : i3 / i5)
▪ Option	Camera / NFC Reader / Barcode Reader
▪ Weight	41kg

HARDWARE B

Vertical



#Standing #RemovableWheel #ColorChangeable #Vertical/Pivot #MirrorDisplay



Mirror Display

LCD

- **Model** LG
- **Active Area** 1018.08x572.67mm
- **Brightness** 450cd/m²
- **Contrast Ratio** 4000:1
- **Aspect Ratio** 16:9
- **Resolution** 1920x1080(FHD)

KIOSK

- **Dimension** 735x1900x500mm
860x1860x620mm
- **Weight** 100kg
- **Material** EGI, Safety tempered glass
- **Operating temperature** 0~50°C
- **Input** 100-240V(50Hz-60Hz)
- **Power consumption** 350W
- **Network** WIFI, RJ45

Picture



#Standing #RemovableWheel #ColorChangeable #LogoCustomizing #DualDisplay



LCD

▪ Model	LG
▪ Brightness	450cd/m ²
▪ Contrast Ratio	4000:1
▪ Aspect Ratio	16:9
▪ Resolution	1920x1080(FHD)

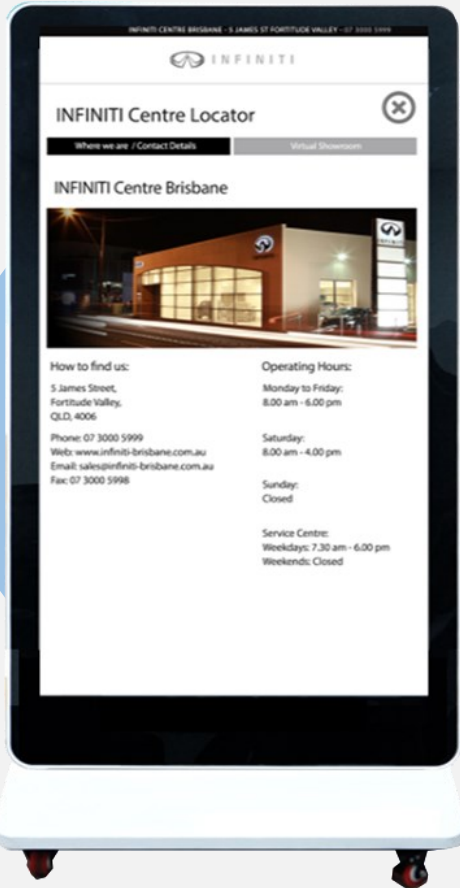
KIOSK

▪ Dimension	700x1900x590mm 980x2127.5x650mm
▪ Weight	100kg / 180kg
▪ Material	EGI, Safety tempered glass
▪ Operating temperature	0~50°C
▪ Input	100-240V(50Hz-60Hz)
▪ Power consumption	500W
▪ Network	WIFI, RJ45

Picture



#Standing #RemovableWheel #ColorChangeable #KidsFriendlyHeight #LogoCustomizing



LCD

- **Model** LG
- **Brightness** 450cd/m²
- **Contrast Ratio** 1400:1
- **Aspect Ratio** 16:9
- **Resolution** 1920x1080(FHD)

KIOSK

- **Dimension** 925x1700x550(110)mm
- **Weight** 100kg
- **Material** EGI, Safety tempered glass, Acrylic
- **Operating temperature** 0~40°C
- **Input** 100~240V(50Hz-60Hz)
- **Power consumption** 500W
- **Network** WIFI, RJ45

Picture



#Standing #RemovableWheel #ColorChangeable #KidsFriendlyHeight



LCD

▪ Model	LG
▪ Brightness	450cd/m ²
▪ Contrast Ratio	1400:1
▪ Aspect Ratio	16:9
▪ Resolution	1920x1080(FHD)

KIOSK

▪ Dimension	925x1700x550(110)mm
▪ Weight	100kg
▪ Material	EGI, Safety tempered glass
▪ Operating temperature	0~50°C
▪ Input	100~240V(50Hz-60Hz)
▪ Power consumption	500W
▪ Network	WIFI, RJ45

#Standing #RemovableWheel #ColorChangeable #LogoCustomizing



LCD

- **Model** LG
- **Brightness** 450cd/m²
- **Contrast Ratio** 1300:1
- **Aspect Ratio** 16:9
- **Resolution** 1920x1080(FHD)

KIOSK

- **Dimension** 640x66x1760mm
837x2127.5x650mm ± 200mm
- **Weight** 50kg
- **Material** EGI, Safety tempered glass
- **Operating temperature** 0~50°C
- **Input** 100~240V(50Hz-60Hz)
- **Power consumption** 350W
- **Network** WIFI, RJ45

Picture



#Standing #RemovableWheel #ColorChangeable #LogoCustomizing #Camera #Sticker



LCD

- **Model** LG LD490EUE-FHB1
- **Brightness** 450cd/m²
- **Contrast Ratio** 1400:1
- **Aspect Ratio** 16:9
- **Resolution** 1920x1080(FHD)

KIOSK

- **Dimension** 735x1900x500mm
- **Material** EGI, Safety tempered glass
- **Operating temperature** 0~50°C
- **Input** 100-240V(50Hz-60Hz)
- **Power consumption** 350W
- **Network** WIFI, RJ45
- **Interface** USB 2.0 x 2 , HDMI 2.0 x 1
- **Speaker** 8Ω10W-P
- **Camera** 1920*1080P

Picture



#Standing #RemovableWheel #ColorChangeable #LogoCustomizing



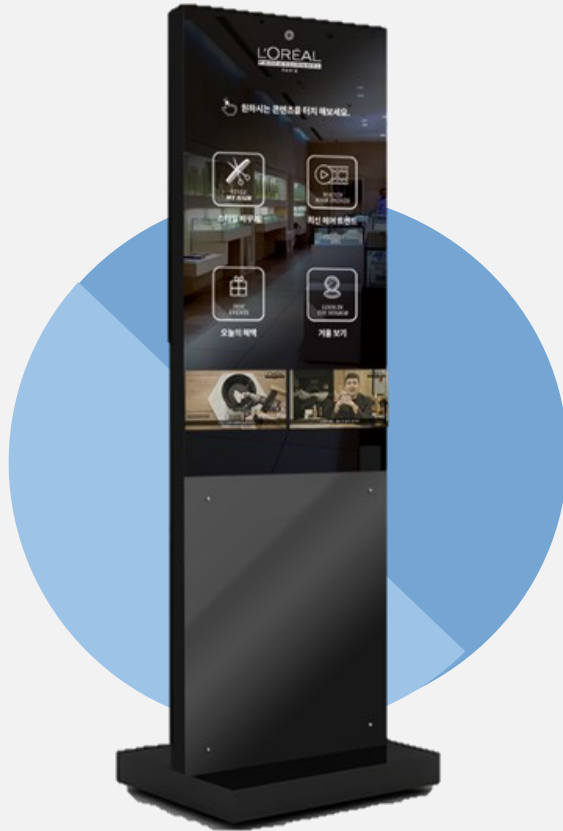
LCD

▪ Model	LG
▪ Brightness	350cd/m ²
▪ Contrast Ratio	1300:1
▪ Aspect Ratio	16:9
▪ Resolution	1920x1080(FHD)

KIOSK

▪ Dimension	770x1835x643mm
▪ Weight	50kg
▪ Material	EGI, Safety tempered glass
▪ Operating temperature	0~50°C
▪ Input	100-240V(50Hz-60Hz)
▪ Power consumption	350W
▪ Network	WIFI, RJ45

#Standing #RemovableWheel #ColorChangeable #LogoCustomizing #MirrorDisplay



LCD

- **Model** LG
- **Brightness** 450cd/m²
- **Size** 31.5"
- **Aspect Ratio** 16:9
- **Resolution** 1920x1080(FHD)

KIOSK

- **Dimension** 727.4x429x227mm
- **Weight** 60kg
- **Material** Metal, Safety tempered glass
- **Operating temperature** 0~35℃
- **Input** 100-240V(50Hz-60Hz)
- **Power consumption** 25W
- **Network** WIFI, RJ45

#Standing #RemovableWheel #ColorChangeable #LogoCustomizing #BarcodeReader #POS #Printer



LCD

- | | |
|-------------------------|----------------------|
| ▪ Model | LG |
| ▪ Brightness | 350cd/m ² |
| ▪ Contrast Ratio | 1300:1 |
| ▪ Aspect Ratio | 16:9 |
| ▪ Resolution | 1920x1080(FHD) |

KIOSK

- | | |
|--------------------------------|----------------------------|
| ▪ Dimension | 740x1550x450mm |
| ▪ Weight | 50kg |
| ▪ Material | EGI, Safety tempered glass |
| ▪ Operating temperature | 0~50°C |
| ▪ Input | 100-240V(50Hz-60Hz) |
| ▪ Power consumption | 350W |
| ▪ Network | WIFI, RJ45 |

설치사진



#Standing #RemovableWheel #ColorChangeable #LogoCustomizing #DualScreen #Outdoor

INDOOR

OUTDOOR



LCD(Indoor)

- **Model** LG 32+21.5inch
- **Brightness** 450cd/m²
- **Contrast Ratio** 4000:1
- **Aspect Ratio** 16:9
- **Resolution** 1920x1080(FHD)

LCD(Outdoor)

- **Model** LG 32+21.5inch
- **Grass** 6mm AR tempered
- **Brightness** 1500cd/m²
- **Contrast Ratio** 4000:1
- **Aspect Ratio** 16:9
- **Resolution** 1920x1080(FHD)

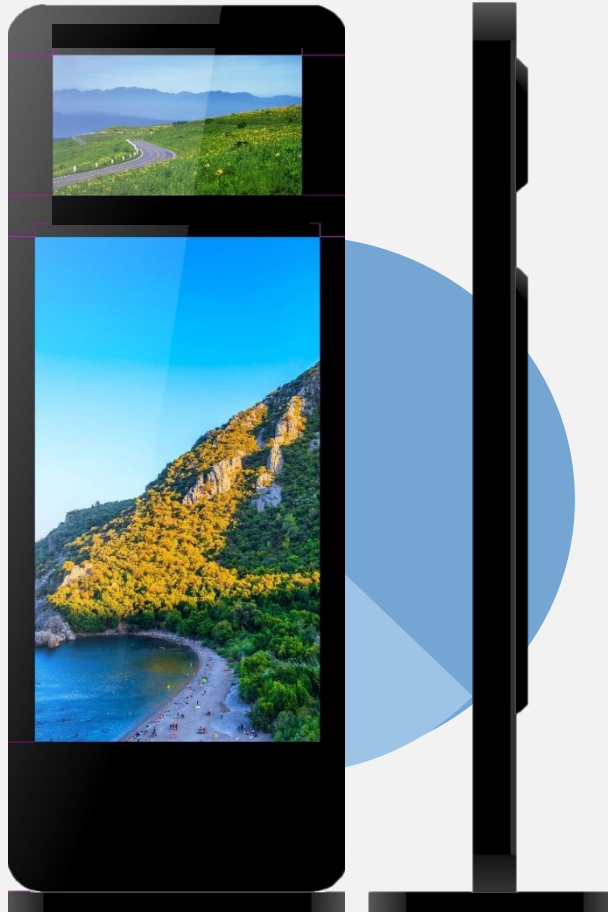
KIOSK

- **Dimension** 620x2100x446mm
580x2100x442mm
- **Weight** 120kg
- **Material** EGI, Safety tempered glass
- **Operating temperature** 0~50°C(Indoor) / -20~60 °C(Outdoor)
- **Input** 100~240V(50Hz-60Hz)
- **Power consumption** 400W
- **Network** WIFI, RJ45

Picture



#Standing #RemovableWheel #ColorChangeable #LogoCustomizing #DualScreen



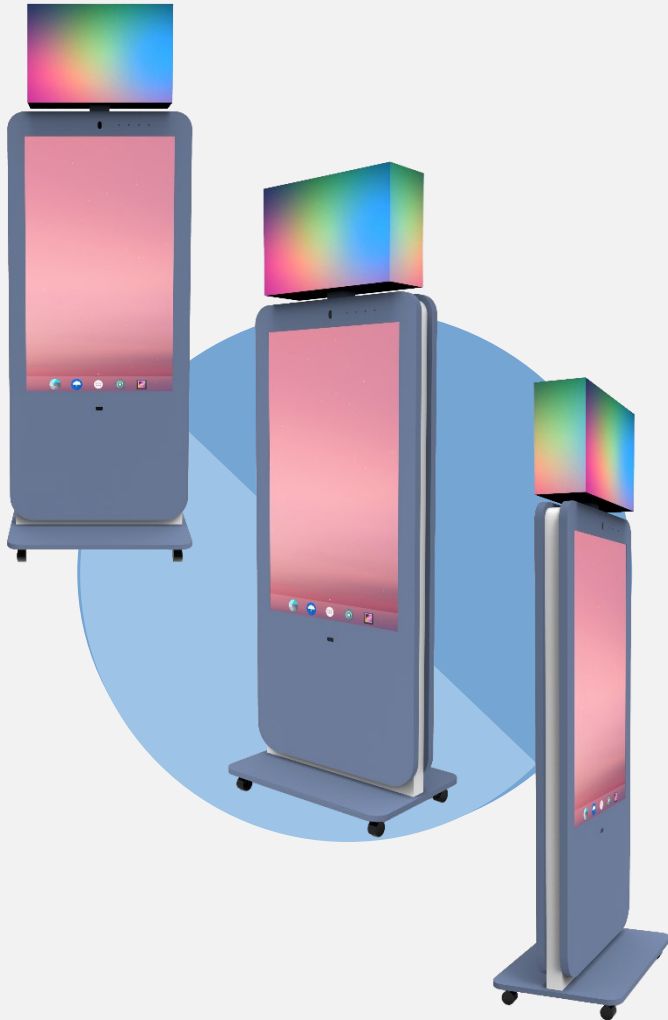
LCD(55")

- **Model** LG
- **Brightness** 450cd/m²
- **Contrast Ratio** 1300:1
- **Aspect Ratio** 16:9
- **Resolution** 1920x1080(FHD)W
- **Power consumption** 350W

LCD(27")

- **Model** LG
- **Brightness** 300cd/m²
- **Contrast Ratio** 1300:1
- **Aspect Ratio** 16:9
- **Resolution** 1920x1080(FHD)
- **Power consumption** 650W

#Standing #RemovableWheel #ColorChangeable #DualSide #FaceRecognition #VoiceRecognition #MotionSensor #3D LED



LED

- Dimension 576x384x192mm
- Pitch P3.0
- Module size 192*192mm
- Resolution 64*64

LCD

- **Model** 49inch
- Glass AR tempered
- Brightness 500cd/m²
- Contrast Ratio 4000:1
- Aspect Ratio 16:9
- Resolution 1920x1080(FHD)

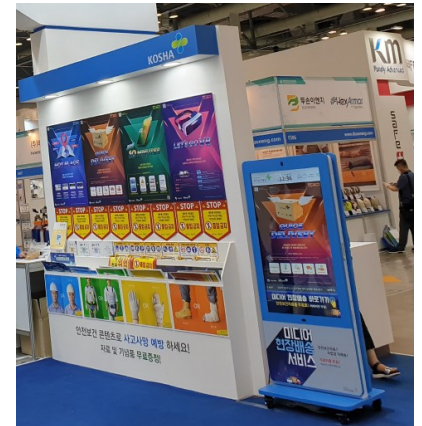
KIOSK

- Dimension 950x2390x384mm
- Weight 120kg
- Material Galvanized steel painting
- Storage temperature -20°C~50°C
- Input 100-240V(50Hz-60Hz)
- Power consumption 500W
- Network WIFI, RJ45
- Other Camera, Motion Sensor, Speaker, MIC

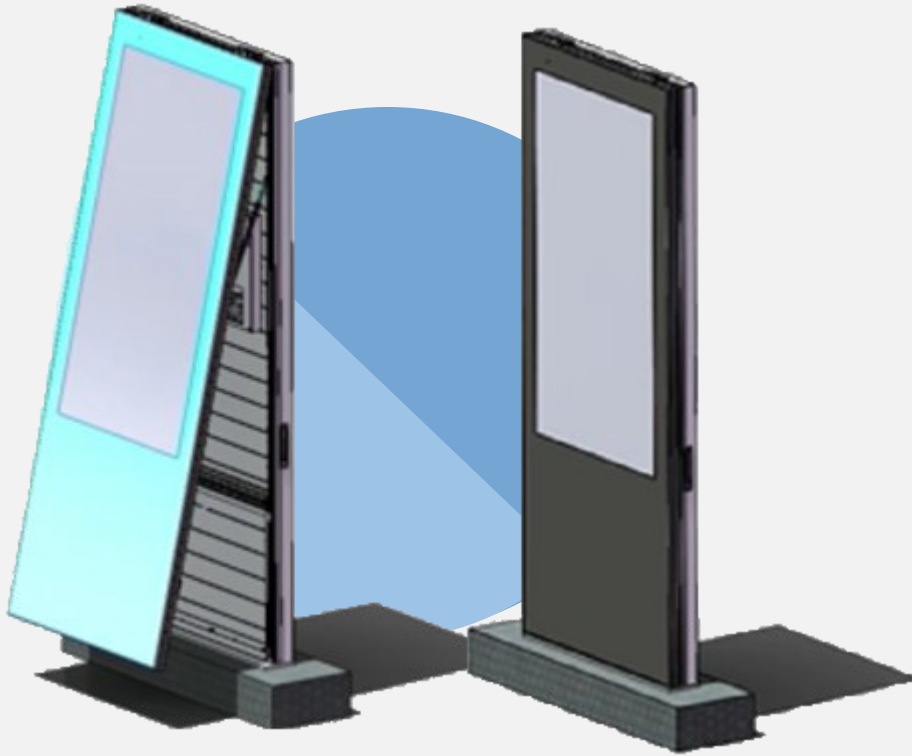
PLAYER

- Android Windows
- CPU: RK 2388 CPU: I5
- RAM: 4G RAM: 8G
- Storage: 16G Storage: 128G

Picture



#Standing #RemovableWheel #ColorChangeable #LogoCustomizing



LCD

- **Model** LG
- **Brightness** 450cd/m²
- **Size** 31.5"
- **Aspect Ratio** 16:9
- **Resolution** 1920x1080(FHD)

KIOSK

- **Dimension** 760x125x227mm
- **Weight** 60kg
- **Material** Metal, Safety tempered glass
- **Operating temperature** 0~35°C
- **Input** 100-240V(50Hz-60Hz)
- **Power consumption** 25W
- **Network** WIFI, RJ45

#Standing #RemovableWheel #ColorChangeable #LogoCustomizing #FaceRecognition



LCD

- **Model** 43inch
- Glass AR tempered
- Brightness 500cd/m²
- Contrast Ratio 4000:1
- Aspect Ratio 16:9
- Resolution 1920x1080(FHD)

KIOSK

- Dimension 950x2390x384mm
- Weight 90kg
- Material Galvanized steel painting
- Storage temperature -20°C~50°C
- Input 100-240V(50Hz-60Hz)
- Power consumption 500W
- Network WIFI, RJ45
- Other Camera, Motion Sensor, Speaker, MIC

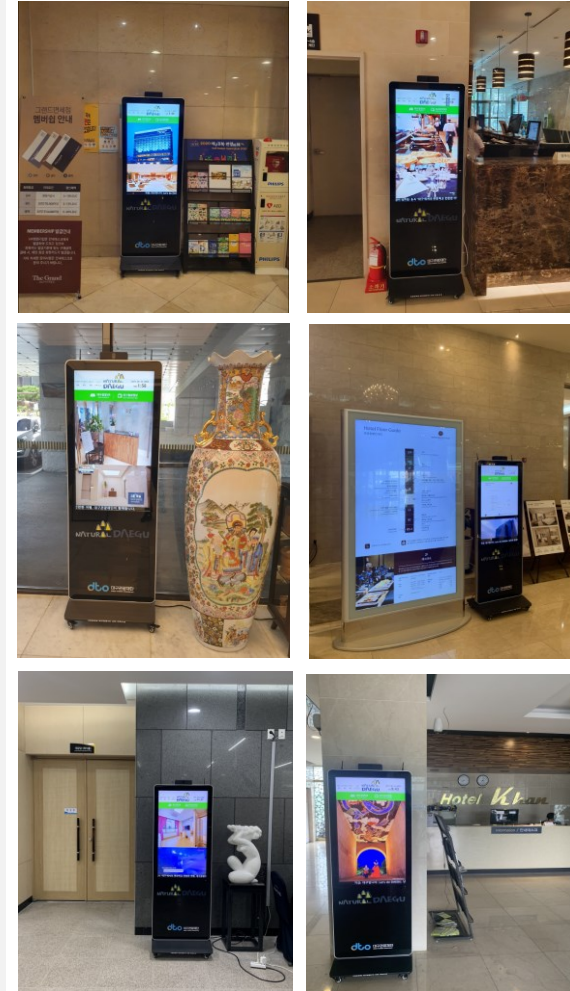
PLAYER

- OS WIN10
- CPU I5
- RAM 8G
- SSD 256G
- GPU GeForce GTX1660(6G GDDR5)

OTHER

- Face Recognition Camera

Picture





HARDWARE c

Horizontal

#Horizontal #WheelRemovable #ColorChangeable #LogoCustomizing



LCD

- **Model** LG
- **Brightness** 450cd/m²
- **Contrast Ratio** 1400:1
- **Aspect Ratio** 16:9
- **Resolution** 1920x1080(FHD)

KIOSK

- **Dimension** 750x1027x1370.75mm ± 200mm
- **Weight** 90kg
- **Material** EGI, Safety tempered glass
- **Operating temperature** 0~50°C
- **Input** 100-240V(50Hz-60Hz)
- **Power consumption** 350W
- **Network** WIFI, RJ45

Picture



#Horizontal #WheelRemovable #ColorChangeable #LogoCustomizing



LCD

▪ Model	LG
▪ Brightness	450cd/m ²
▪ Contrast Ratio	4000:1
▪ Aspect Ratio	16:9
▪ Resolution	1920x1080(FHD)

KIOSK

▪ Dimension	1370x1500x650mm ± 300mm
▪ Weight	120kg
▪ Material	EGI, Safety tempered glass
▪ Operating temperature	0~50℃
▪ Input	100-240V(50Hz-60Hz)
▪ Power consumption	350W
▪ Network	WIFI, RJ45

#Horizontal #WheelRemovable #ColorChangeable #LogoCustomizing



LCD

- **Model** LG
- **Brightness** 450cd/m²
- **Contrast Ratio** 4000:1
- **Aspect Ratio** 16:9
- **Resolution** 1920x1080(FHD)

KIOSK

- **Dimension** 750x1027x1370.75mm ± 200mm
- **Weight** 120kg
- **Material** EGI, Safety tempered glass
- **Operating temperature** 0~50°C
- **Input** 100-240V(50Hz-60Hz)
- **Power consumption** 500W
- **Network** WIFI, RJ45

#Horizontal #WheelRemovable #ColorChangeable #LogoCustomizing



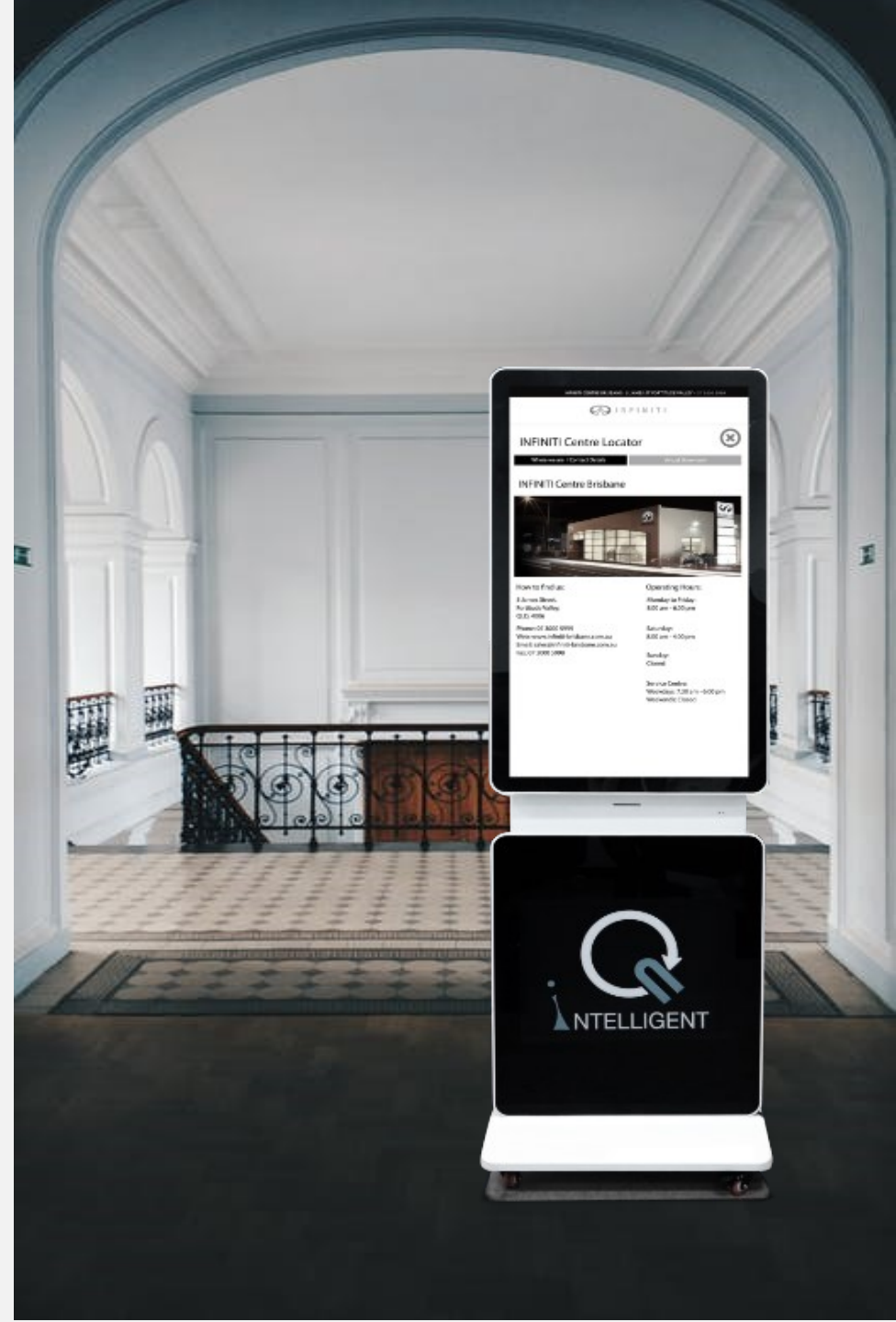
LCD

- | | |
|-------------------------|----------------------|
| ▪ Model | LG |
| ▪ Brightness | 450cd/m ² |
| ▪ Contrast Ratio | 1400:1 |
| ▪ Aspect Ratio | 16:9 |
| ▪ Resolution | 1920x1080(FHD) |

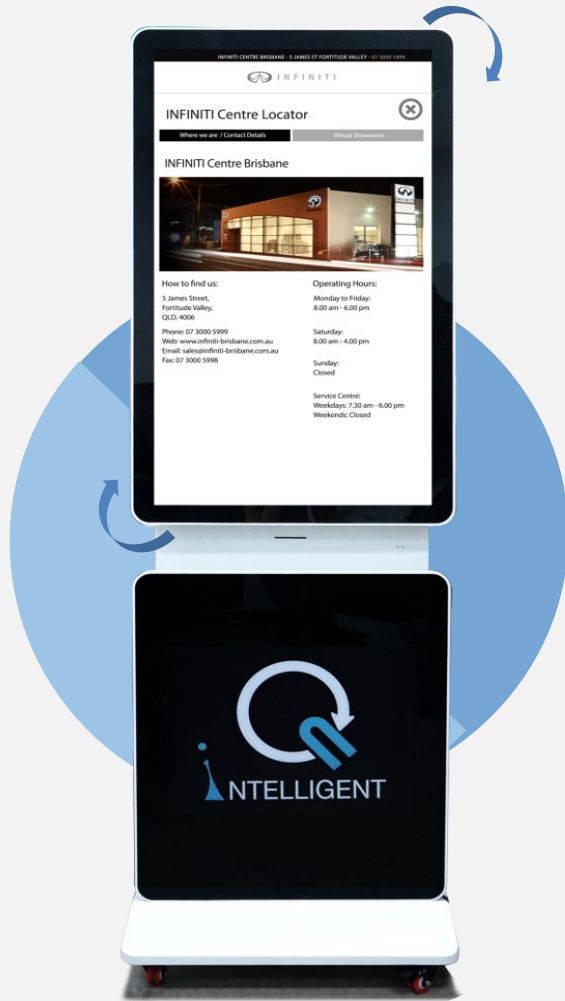
KIOSK

- | | |
|--------------------------------|----------------------------|
| ▪ Dimension | 750x1027x1370.75mm ± 200mm |
| ▪ Weight | 90kg |
| ▪ Material | EGI, Safety tempered glass |
| ▪ Operating temperature | 0~50℃ |
| ▪ Input | 100-240V(50Hz-60Hz) |
| ▪ Power consumption | 350W |
| ▪ Network | WIFI, RJ45 |

HARDWARE D
Pivot



#Pivot #WheelRemovable #ColorChangeable #LogoCustomizing



LCD

- | | |
|-------------------------|----------------------|
| ▪ Model | LG |
| ▪ Brightness | 450cd/m ² |
| ▪ Contrast Ratio | 1100:1 |
| ▪ Aspect Ratio | 16:9 |
| ▪ Resolution | 1920x1080(FHD) |

KIOSK

- | | |
|--------------------------------|----------------------------|
| ▪ Dimension | 718x475x1625mm |
| ▪ Material | EGI, Safety tempered glass |
| ▪ Operating temperature | 0~50°C |
| ▪ Input | 100-240V(50Hz-60Hz) |
| ▪ Power consumption | 350W |
| ▪ Network | WIFI, RJ45 |
| ▪ Interface | USB 2.0 x 2 |
| ▪ Speaker | 5~10W * 2 |

Pivot



#Pivot #WheelRemovable #ColorChangeable #LogoCustomizing #KidsFriendlyHeight



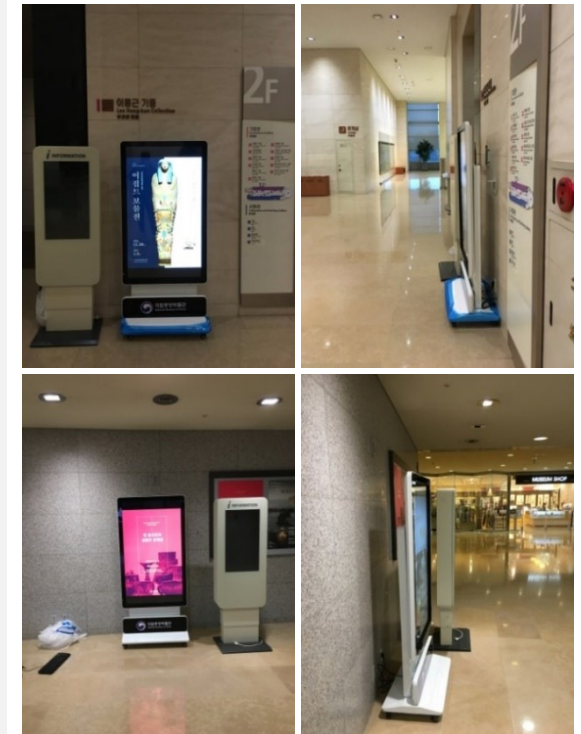
LCD

- | | |
|-------------------------|----------------------|
| ▪ Model | LG |
| ▪ Brightness | 450cd/m ² |
| ▪ Contrast Ratio | 1400:1 |
| ▪ Aspect Ratio | 16:9 |
| ▪ Resolution | 1920x1080(FHD) |

KIOSK

- | | |
|--------------------------------|----------------------------|
| ▪ Dimension | 785.82x1700x450(120)mm |
| ▪ Material | EGI, Safety tempered glass |
| ▪ Operating temperature | 0~50°C |
| ▪ Input | 100-240V(50Hz-60Hz) |
| ▪ Power consumption | 500W |
| ▪ Network | WIFI, RJ45 |

Picture





HARDWARE E

Outdoor

#Outdoor #ColorChangeable #LogoCustomizing #IP55WaterProof



LCD

- **Model** LG(Outdoor)
- **Glass** AR tempered
- **Brightness** 2000cd/m²
- **Contrast Ratio** 4000:1
- **Aspect Ratio** 16:9
- **Resolution** 1920x1080(FHD)

KIOSK

- **Dinemsion** 880x21874x400mm
- **Weight** 220kg
- **Material** Galvanized steel painting
- **Storage temperature** -20°C~50°C
- **Input** 100-240V(50Hz-60Hz)
- **Power consumption** 400W
- **Network** WIFI, RJ45

Picture



#Outdoor #ColorChangeable #LogoCustomizing #IP55WaterProof



LCD

- **Model** LG(Outdoor)
- **Glass** 6mm AR tempered
- **Brightness** 2000cd/m²
- **Contrast Ratio** 4000:1
- **Aspect Ratio** 16:9
- **Resolution** 1920x1080(FHD)

KIOSK

- **Dinemsion** 820x1450x220mm
- **Weight** 220kg
- **Material** Galvanized steel painting
- **Storage temperature** -20°C~60°C
- **Input** 100-240V(50Hz-60Hz)
- **Power consumption** 400W
- **Network** WIFI, RJ45

Picture



#Outdoor #ColorChangeable #LogoCustomizing #IP55WaterProof



LCD

▪ Model	LG(Outdoor)
▪ Glass	6mm AR tempered
▪ Brightness	2500cd/m ²
▪ Contrast Ratio	4000:1
▪ Aspect Ratio	16:9
▪ Resolution	1920x1080(FHD)

KIOSK

▪ Dinemsion	880x2000x230mm
▪ Weight	220kg
▪ Material	Galvanized steel painting
▪ Storage temperature	-20℃~60℃
▪ Input	100~240V(50Hz~60Hz)
▪ Power consumption	400W
▪ Network	WIFI, RJ45

Picture



#Outdoor #ColorChangeable #LogoCustomizing #IP55WaterProof #Standing #WallHanging



LCD

- **Model** LG 32" TFT-LCD
- **Brightness** 1500cd/m²
- **Contrast Ratio** 2000:1
- **Aspect Ratio** 16:9
- **Resolution** 1920x1080(FHD)

KIOSK

- **Dimension(Stand)** 900x310x1615mm
- **Dimension(Hanging)** 900x150x515mm
- **Material** EGI, Safety tempered glass
- **Operating temperature** 0~50°C
- **Storage temperature** -35°C~55°C
- **Input** 100~240V(50Hz~60Hz)
- **Power consumption** 350W
- **Network** WIFI, RJ45
- **Interface** USB 2.0 x 2 , HDMI 2.0 x 1
- **Speaker** 2x10W (8 ohm)

Picture



#Outdoor #ColorChangeable #LogoCustomizing #IP55WaterProof

LCD

- **Model** LG(Outdoor)
- **Glass** 6mm AR tempered
- **Brightness** 2500cd/m²
- **Contrast Ratio** 4000:1
- **Aspect Ratio** 16:9
- **Resolution** 1920x1080(FHD)

KIOSK

- **Dinemsion** 1600x2300x650mm
- **Weight** 220kg
- **Material** SUS304
- **Storage temperature** -20°C~55°C
- **Input** 100-240V(50Hz-60Hz)
- **Power consumption** 600W
- **Network** WIFI, RJ45



Picture



#Outdoor #3DLED #LogoCustomizing #MotionSensor



LED

- **Dinemsion** 576x384x384mm
- **Pitch** P3.0
- **Module size** 192*192mm
- **Resolution** 64*64
- **level** IP65 , IP54

LCD

- **Model** 55inch
- **Glass** AR tempered
- **Brightness** 3000cd/m²
- **Contrast Ratio** 4000:1
- **Aspect Ratio** 16:9
- **Resolution** 1920x1080(FHD)

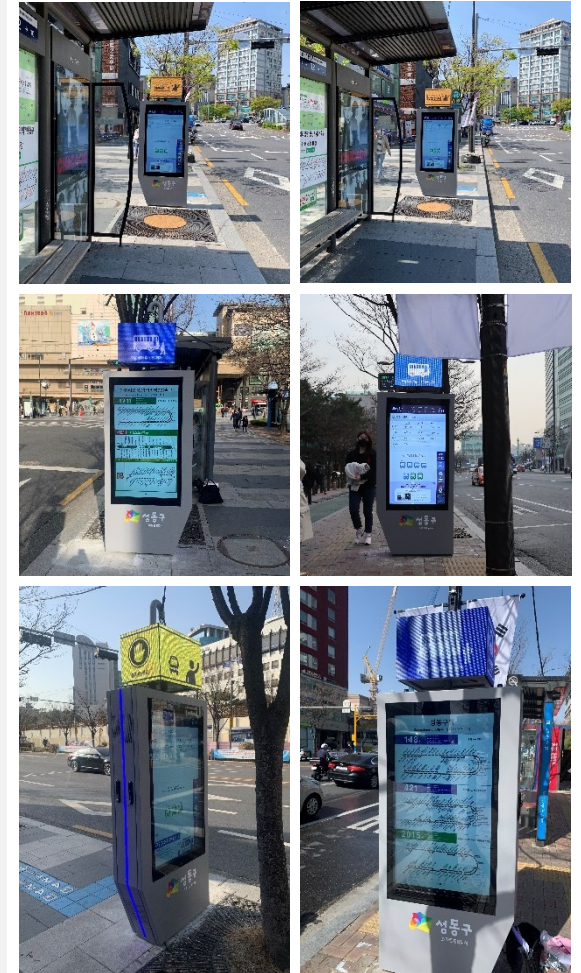
KIOSK

- **Dinemsion** 950x2390x384mm
- **Weight** 270kg
- **Material** Galvanized steel painting
- **Storage temperature** -20°C~50°C
- **Input** 100-240V(50Hz-60Hz)
- **Power consumption** 1500W,2000W
- **Network** WIFI, RJ45
- **Air conditioning system** Cooling fan

PLAYER

- Android
- CPU: RK 2388
- RAM: 4G
- Storage: 16G
- Windows
- CPU: I7
- RAM: 8G
- Storage: 128G

Picture



#Outdoor #Grounded #LogoPrint #ColorCustomizing #IP55WaterProof #Peripherals #CCTV



LCD

- **Model** 40inch/55inch
- **Glass** 6mm AR tempered
- **Brightness** 1500cd/m²
- **Contrast Ratio** 4000:1
- **Aspect Ratio** 16:9
- **Resolution** 1920x1080(FHD)

KIOSK

- **Dinemsion** 2000x4400x800mm/
2000x3500x800mm
- **Weight** 220kg
- **Material** Galvanized steel painting
- **Storage temperature** -20℃~60℃
- **Input** 100-240V(50Hz-60Hz)
- **Power consumption** 1500W
- **Network** WIFI, RJ45

설치사진



HARDWARE F
Table



#Table #WheelRemovable #ColorChangeable #LogoCustomizing



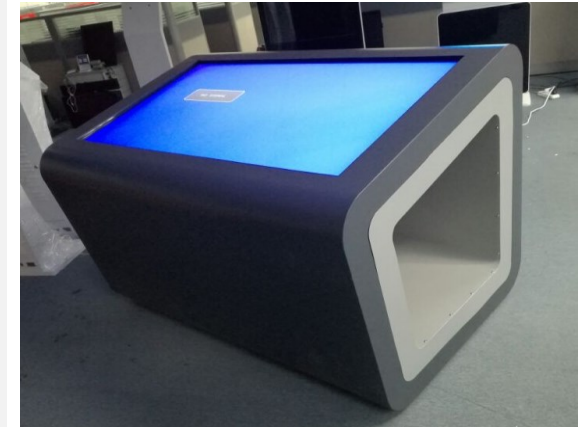
LCD

- | | |
|-------------------------|----------------------|
| ▪ Model | LG |
| ▪ Brightness | 450cd/m ² |
| ▪ Contrast Ratio | 1300:1 |
| ▪ Aspect Ratio | 16:9 |
| ▪ Resolution | 1920x1080(FHD) |

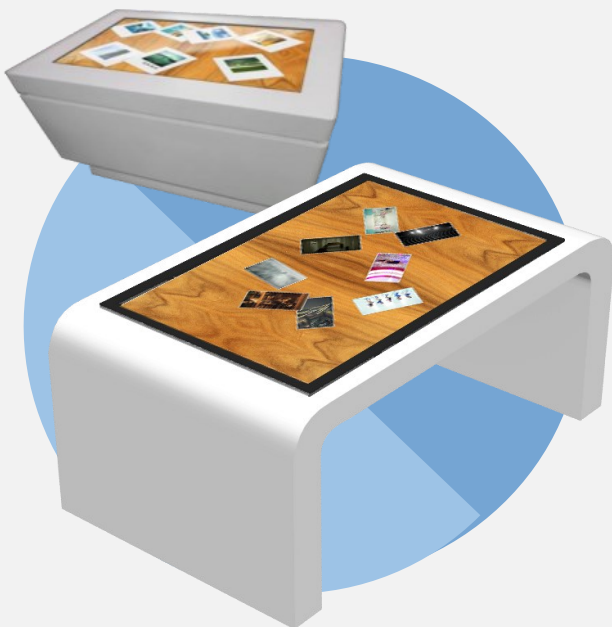
KIOSK

- | | |
|-----------------------|----------------------------|
| ▪ Dinemsion | 1760x860x750mm |
| ▪ Weight | 110kg |
| ▪ Material | EGI, Safety tempered glass |
| ▪ Storage temperature | 0~50°C |
| ▪ Input | 100~240V(50Hz-60Hz) |
| ▪ Power consumption | 500W |
| ▪ Network | WIFI, RJ45 |

Picture



#Table #WheelRemovable #ColorChangeable #LogoCustomizing



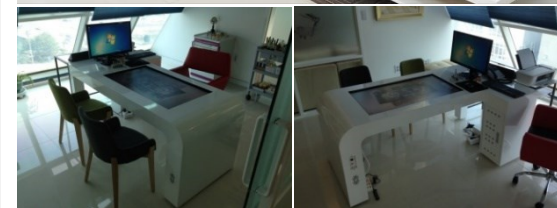
LCD

- **Model** LG
- **Brightness** 450cd/m²
- **Contrast Ratio** 1300:1
- **Aspect Ratio** 16:9
- **Resolution** 1920x1080(FHD)

KIOSK

- **Dinemsion** 1760x860x750mm
- **Weight** 120kg
- **Material** EGI, Safety tempered glass
- **Storage temperature** 0~50°C
- **Input** 100-240V(50Hz-60Hz)
- **Power consumption** 500W
- **Network** WIFI, RJ45

Picture



#Table #WheelRemovable #ColorChangeable #LogoCustomizing



LCD

- | | |
|-------------------------|----------------------|
| ▪ Model | LG |
| ▪ Brightness | 450cd/m ² |
| ▪ Contrast Ratio | 1300:1 |
| ▪ Aspect Ratio | 16:9 |
| ▪ Resolution | 1920x1080(FHD) |

KIOSK

- | | |
|-----------------------|----------------------------|
| ▪ Dimension | 1004.5x466.88x755.5mm |
| ▪ Weight | 70kg |
| ▪ Material | EGI, Safety tempered glass |
| ▪ Storage temperature | 0~50°C |
| ▪ Input | 100-240V(50Hz-60Hz) |
| ▪ Power consumption | 500W |
| ▪ Network | WIFI, RJ45 |

Picture



HARDWARE **G**
Others



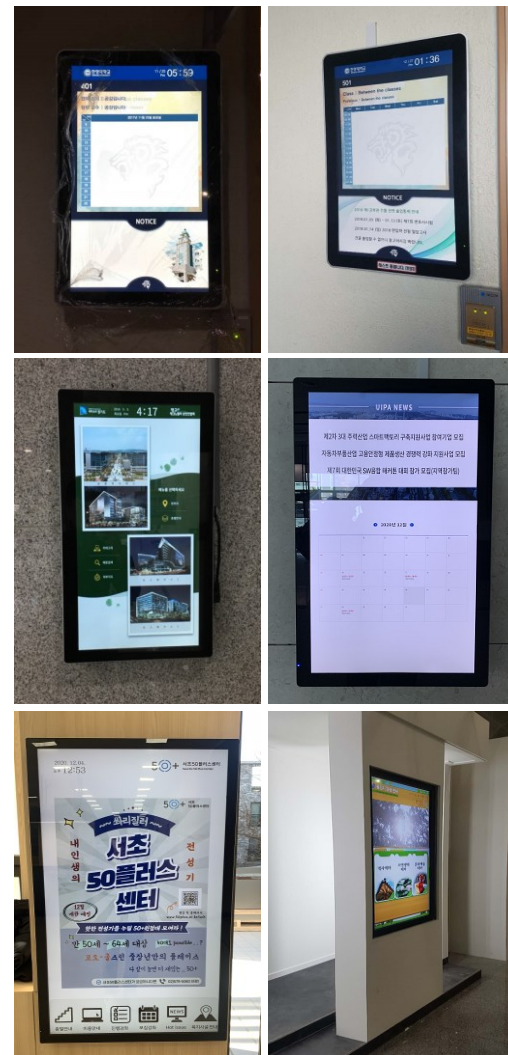
#Monitor #WallHanging #WallMount #ColorChangeable



LCD

- Model 24inch Panel
- Resolution 1920*1080
- Brightness 250cd/m²
- Contrast Ratio 700 : 1
- Aspect Ratio 16:9
- Network 802.11b/g/n
100M/1000M Ethernet
Bluetooth 4.0
- Interface USB RJ45 HDMI
3.5mm earphone
- Power consumption 35W
- Speaker 2*3W
- Camera 2.0M/P, front camera
- Dimension 580*349*32.5mm(L*W*H)
- Adapter Adapter, 12V/3A

Picture



#TransperantLCD #Touch #Box/Stand #HandCarry



LCD

▪ Model	MP220A3CG
▪ Module Size	493.7x371mm
▪ Active Area	472x295mm
▪ Contrast Ratio	500:1
▪ Resolution	1680x1050
▪ Dimension	530x460x300mm
▪ Weight	15kg

#TransperantLCD #Touch #Box/Stand #HandCarry



LCD

▪ Model	MP460A3CG
▪ Module Size	1056.1x631.3mm
▪ Contrast Ratio	1300:1
▪ Resolution	1920x1050
▪ Dimension	1100x1900x625mm
▪ Weight	150kg



HARDWARE H

Android

Android Set Top Box

#Q-Sign Optimized #Power Remote control #Long-term Content Playback time



QA1800

▪ Model	QA1800
▪ OS	Android 7.1
▪ Chipset	RK3288
▪ CPU	ARM CORTEX-A17 1.6GHz
▪ GPU	ARM Mali-T764
▪ RAM	2GB
▪ Internal memory	16GB
▪ Video out	HDMI
▪ Interface	USB 2.0
▪ Wi-Fi	802.11b/g/n
▪ Ethernet	Ethernet (LAN) RJ45
▪ Keyboard/Mouse	support
▪ Dimension	139mm (W) * 123mm (D) * 43mm (H)

#AndroidExclusive #Pad #ColorChangeable



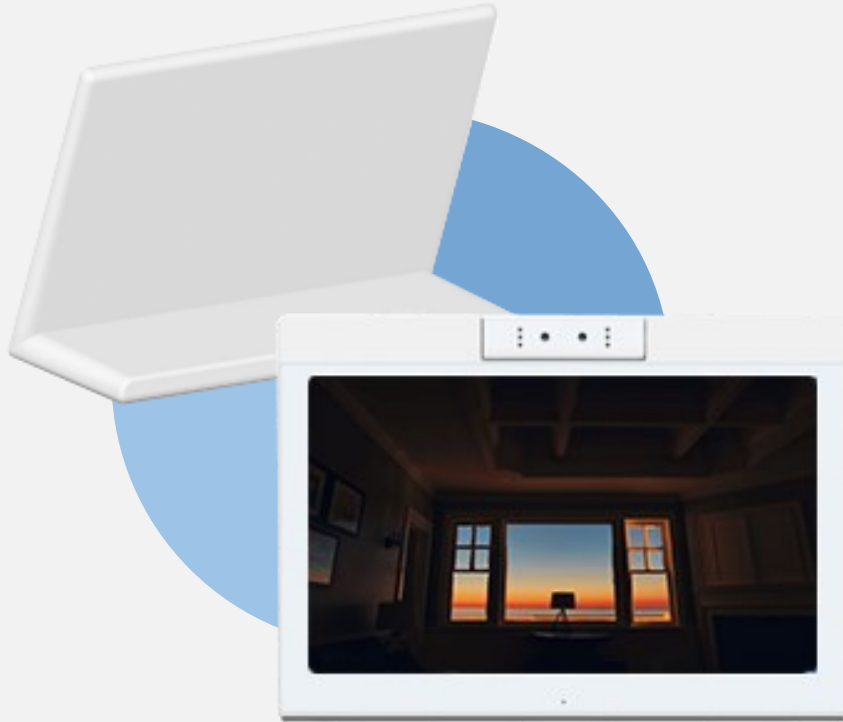
LCD(7")

- Model 7inch Panel
- Resolution **1024*600**
- Brightness 250cd/m²
- Contrast Ratio 500:1
- Aspect Ratio 16:9
- Disply area 1209.6(H)x680.4mm(V)
- Network 802.11b/g/n
100M/1000M Ethernet
Bluetooth 4.0
- Interface USB RJ45 HDMI
3.5mm earphone
- Power consumption 15W
- Speaker 2*1W
- Camera 2.0M/P,Front camera
- Dimension 181*10.5*120.6mm

Picture



#AndroidExclusive #Pad #ColorChangeable

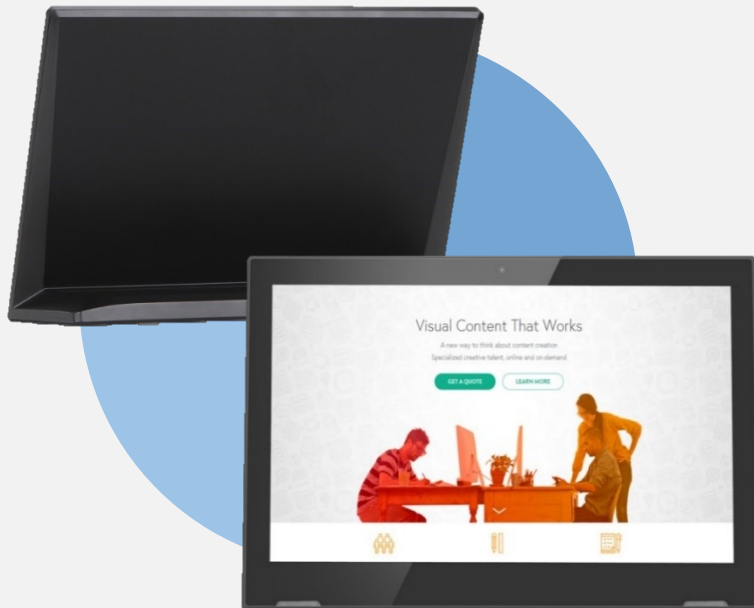


LCD(10")

▪ Model	10inch Panel
▪ Resolution	1280*800
▪ Brightness	250cd/m ²
▪ Contrast Ratio	800 : 1
▪ Aspect Ratio	16:9
▪ Network	802.11b/g/n 100M/1000M Ethernet Bluetooth 4.0
▪ Interface	USB RJ45 HDMI 3.5mm earphone
▪ Power consumption	15W
▪ Speaker	2*1W
▪ Camera	2.0M/P,Front camera
▪ Dimension	243*11.7*170mm
▪ Adapter	Adapter,12V/1.5A

LCD(14")

▪ Model	14inch Panel
▪ Resolution	1920*1080
▪ Brightness	250cd/m ²
▪ Contrast Ratio	800 : 1
▪ Aspect Ratio	16:9
▪ Network	802.11b/g/n 100M/1000M Ethernet Bluetooth 4.0
▪ Interface	USB RJ45 HDMI 3.5mm earphone with microphone
▪ Power consumption	15W
▪ Speaker	2*2W
▪ Camera	2.0M/P,front camera
▪ Dimension	349*112*239mm(L*W*H)
▪ Adapter	Adapter,12V/1.5A



LCD

- Model 13inch Panel
- Resolution **1920*1080**
- Brightness 250cd/m²
- Contrast Ratio 800 : 1
- Aspect Ratio 16:9
- Network 802.11b/g/n
100M/1000M Ethernet
Bluetooth 4.0
- Interface USB RJ45 HDMI
3.5mm earphone
- Power consumption 15W
- Speaker 2*2W
- Camera 2.0M/P, front camera
- Dimension 329*205*115mm(L*W*H)
- Adapter Adapter, 12V/1.5A



LCD(15")

▪ Model	15inch Panel
▪ Resolution	1920*1080
▪ Brightness	250cd/m ²
▪ Contrast Ratio	800 : 1
▪ Aspect Ratio	16:9
▪ Network	802.11b/g/n 100M/1000M Ethernet Bluetooth 4.0
▪ Interface	USB RJ45 HDMI 3.5mm earphone with microphone
▪ Power consumption	15W
▪ Speaker	2*2W
▪ Camera	2.0M/P, front camera
▪ Dimension	389*242*142mm(L*W*H)
▪ Adapter	Adapter, 12V/1.5A

LCD(17")

▪ Model	17inch Panel
▪ Resolution	1920*1080
▪ Brightness	250cd/m ²
▪ Contrast Ratio	800 : 1
▪ Aspect Ratio	16:9
▪ Network	802.11b/g/n 100M/1000M Ethernet Bluetooth 4.0
▪ Interface	USB RJ45 HDMI 3.5mm earphone with microphone
▪ Power consumption	15W
▪ Speaker	2*2W
▪ Camera	2.0M/P, front camera
▪ Dimension	427*268*152mm(L*W*H)
▪ Adapter	Adapter, 12V/1.5A

#AndroidExclusive #Pad #ColorChangeable



LCD

- Model 14inch Panel
- Resolution 1920*1080
- Brightness 250cd/m²
- Contrast Ratio 700 :1
- Aspect Ratio 16:9
- Network 802.11b/g/n
100M/1000M Ethernet
Bluetooth 4.0
- Interface USB RJ45 HDMI
3.5mm earphone
- Power consumption 15W
- Speaker 2*2W
- Camera 2.0M/P, front camera
- Dimension 342*220*25mm(L*W*H)
- Adapter Adapter, 12V/3A

#AndroidExclusive #Pad #ColorChangeable



LCD(15")

▪ Model	15inch Panel
▪ Resolution	1920*1080
▪ Brightness	300cd/m ²
▪ Contrast Ratio	700 : 1
▪ Aspect Ratio	16:9
▪ Network	802.11b/g/n 100M/1000M Ethernet Bluetooth 4.0
▪ Interface	USB RJ45 HDMI 3.5mm earphone
▪ Power consumption	15W
▪ Speaker	2*2W
▪ Camera	2.0M/P, front camera
▪ Dimension	388*245*27mm(L*W*H)
▪ Adapter	Adapter, 12V/3A

LCD(17")

▪ Model	17inch Panel
▪ Resolution	1920*1080
▪ Brightness	250cd/m ²
▪ Contrast Ratio	700 : 1
▪ Aspect Ratio	16:9
▪ Network	802.11b/g/n 100M/1000M Ethernet Bluetooth 4.0
▪ Interface	USB RJ45 HDMI 3.5mm earphone
▪ Power consumption	15W
▪ Speaker	2*2W
▪ Camera	2.0M/P, front camera
▪ Dimension	417*262*27mm(L*W*H)
▪ Adapter	Adapter, 12V/3A

#AndroidExclusive #Pad #ColorChangeable



LCD(18")

- Model 18inch Panel
- Resolution **1920*1080**
- Brightness 250cd/m²
- Contrast Ratio 700 : 1
- Aspect Ratio 16:9
- Network 802.11b/g/n
100M/1000M Ethernet
Bluetooth 4.0
- Interface USB RJ45 HDMI
3.5mm earphone
- Power consumption 15W
- Speaker 2*2W
- Camera 2.0M/P, front camera
- Dimension 468*288*38mm(L*W*H)
- Adapter Adapter, 12V/3A

LCD(17")

- Model 21inch Panel
- Resolution **1920*1080**
- Brightness 250cd/m²
- Contrast Ratio 700 : 1
- Aspect Ratio 16:9
- Network 802.11b/g/n
100M/1000M Ethernet
Bluetooth 4.0
- Interface USB RJ45 HDMI
3.5mm earphone
- Power consumption 15W
- Speaker 2*3W
- Camera 2.0M/P, front camera
- Dimension 538*331*37mm(L*W*H)
- Adapter Adapter, 12V/3A

#AndroidExclusive #Pad #ColorChangeable



LCD

- Model 32inch Panel
- Resolution 1920*1080
- Brightness 250cd/m²
- Contrast Ratio 3000 :1
- Aspect Ratio 16:9
- Network 802.11b/g/n
100M/1000M Ethernet
Bluetooth 4.0
- Interface USB RJ45 HDMI
3.5mm earphone
- Power consumption 35W
- Speaker 2*3W
- Dimension 750*449*42mm(L*W*H)
- Adapter Adapter, 12V/5A

#AndroidExclusive #Pad #ColorChangeable #MirrorDisplay



LCD

- Size 3.6inch
- Brightness 300cd/m²
- Aspect Ratio 16:9
- Resolution 1920x1080(FHD)

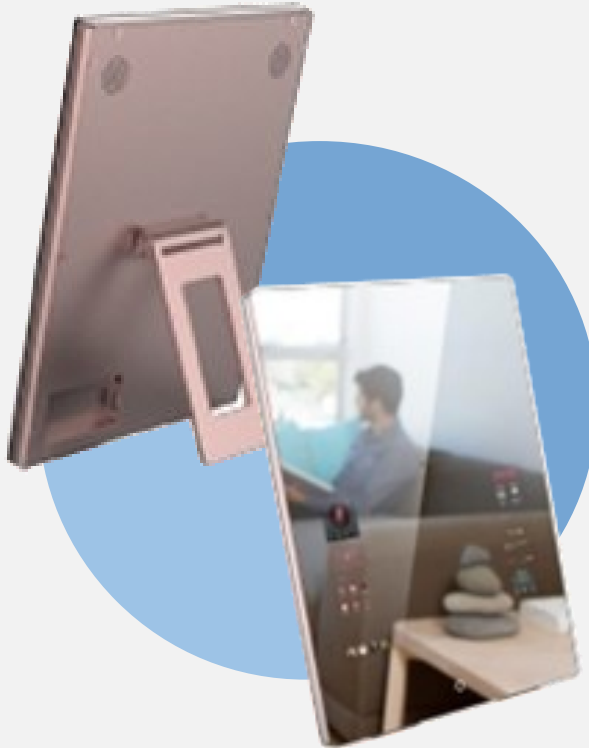
KIOSK

- Dimension 800x600x23mm
- Weight 12.5 kg
- Material Metal, Safety tempered glass
- Operating temperature 0~35°C
- Input 100~240V
- Power consumption 25W

설치사진



#AndroidExclusive #Pad #ColorChangeable #MirrorDisplay



LCD

- Size 10.1 inch
- Brightness 150 cd/m²
- Resolution 1200x1920(FHD)

KIOSK

- Dimension 360x270x15.7mm
- Weight 2.2 kg
- Material Metal
- Operating temperature 0~40°C
- Input 100-240V
- Power consumption 25W

#AndroidExclusive #Pad #ColorChangeable #WallHanging



LCD

▪ Model	BOE
▪ Active Area	293.76*165.24mm
▪ Brightness	400cd/m ²
▪ Contrast Ratio	800:1
▪ Aspect Ratio	16:9
▪ Resolution	1920*1080

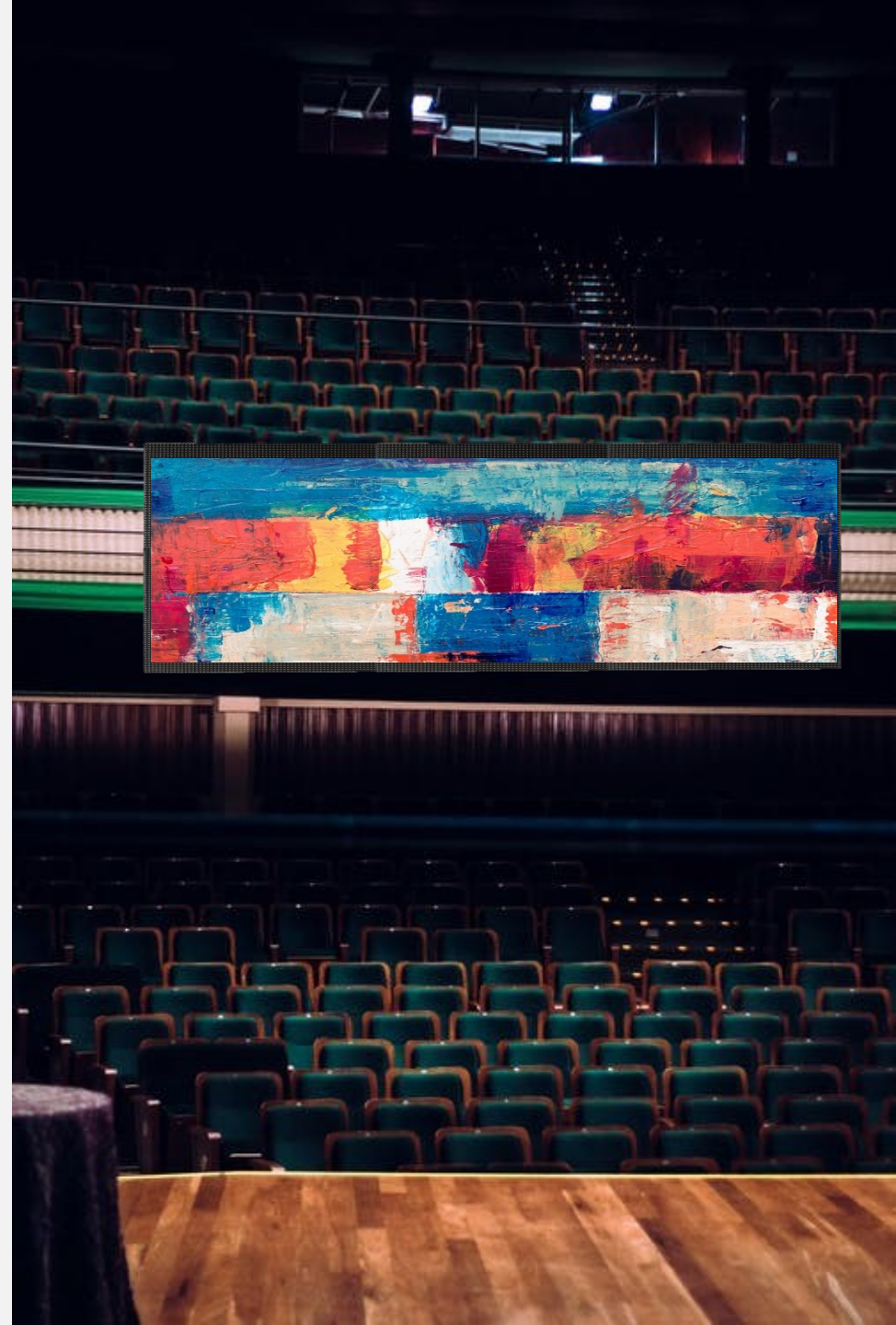
KIOSK

▪ Dimension	381*240*100mm ± 200mm
▪ Weight	5kg
▪ Material	SPCC 냉간압연강판
▪ Operating temperature	-10~40℃
▪ Input	12V-24V
▪ Power consumption	45W

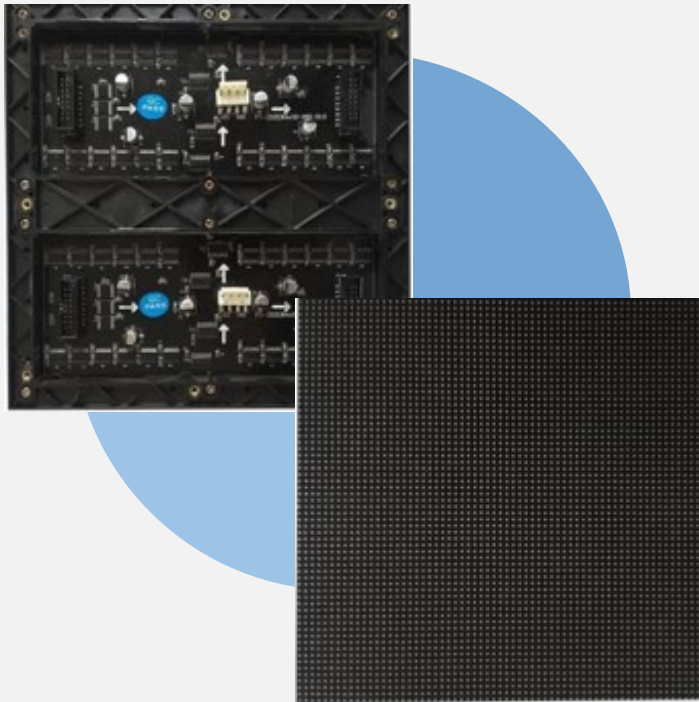
Picture



HARDWARE |
LED



#LED #SignBoard #P3LED #LargeLED



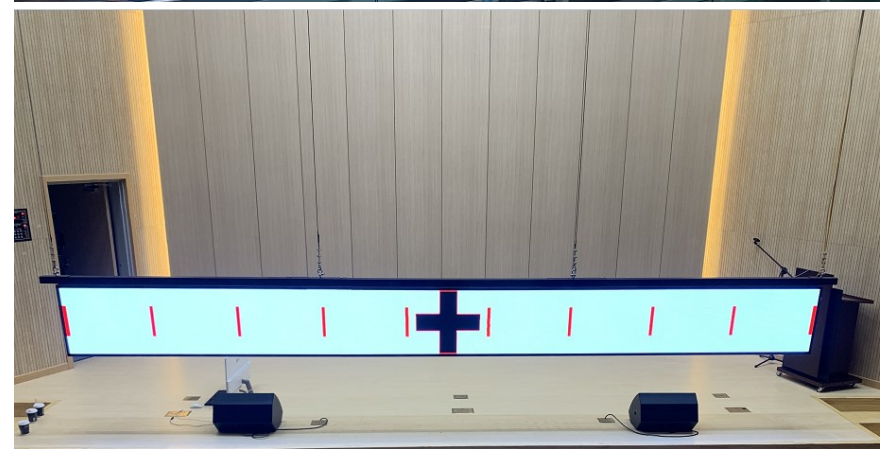
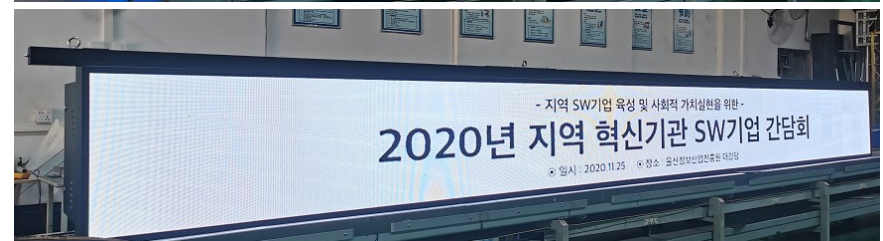
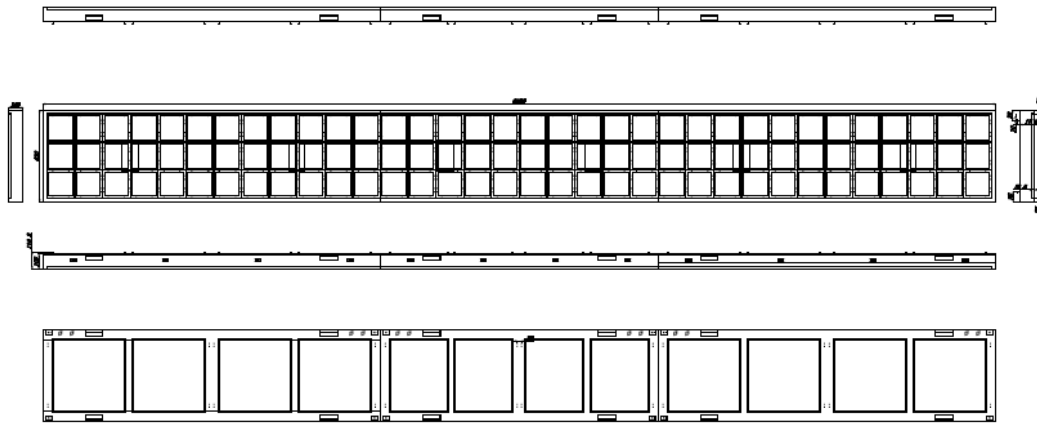
P3LED

Physical Pitch	3mm
Pixel Configuration	SMD 2121
Pixel Density	111111dots/m ²
LED Module Dimensions (mm)	192 *192
Panel Dimensions (WxHxD) (mm)	6528 X 576 X 10
Physical Resolution of Module (WxH)	64*64
No.of Modules Per Panel (WxH)	
Weight Per Panel	0.3kg/panel
Weight Per m ²	25kg/m ²
Processing	16bit
Colours	429 Trillions
Contrast Ratio	≥5000: 1
Average Power Consumption	350~800W/panel
Max Power Consumption	3000W/panel
Operating Temp/Humidity	-25 ~ +65 °C / 10% ~ 95%RH
Storage Temp/Humidity	-40 ~ +85 °C / 10% ~ 95%RH
Brightness	1000CD/m ²
Refresh Rate	3840Hz can be set (refresh rate is higher, it looks soft and comfortable to the naked eye, and it does not hurt the eyes when playing PPT pictures)
Horizontal Viewing Angle	≥ 160°
Vertical Viewing Angle	≥ 160°
Expected LED Lifetime (Max)	≥ 100,000 hours
Max Stacking	102 panels

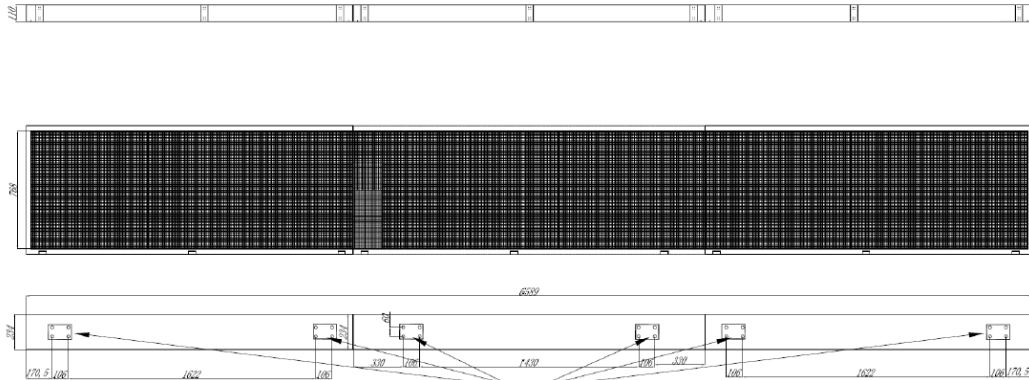
#LED #SignBoard #P3LED #LargeLED

Installation

6580* 630* 100mm

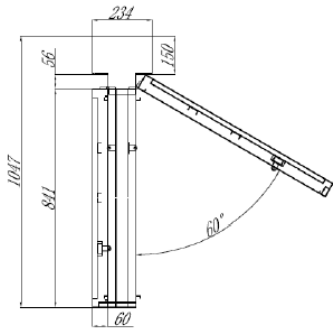


Installation

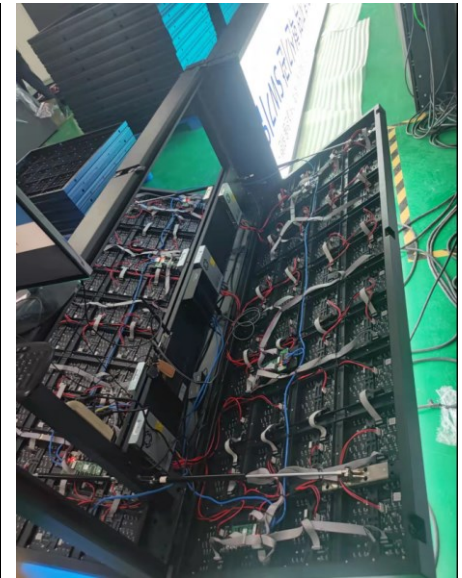
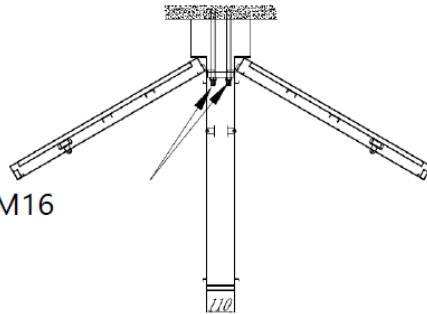


Bolt Assemble

Power Consumption 9-10KW
Total Weight 300KG



M16





HARDWARE J
Video Wall

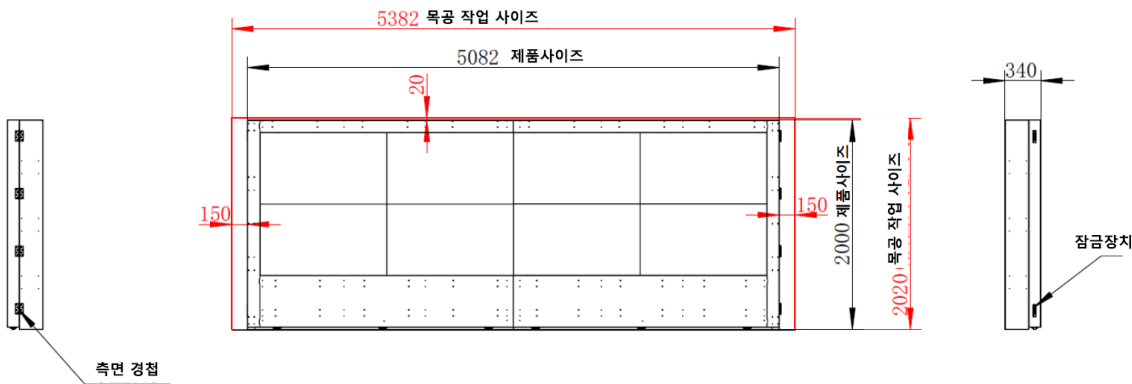


#VideoWall #55inch 2*4 #FrontSideOpen

2*4 Video Wall Installation



Blue print



Specification

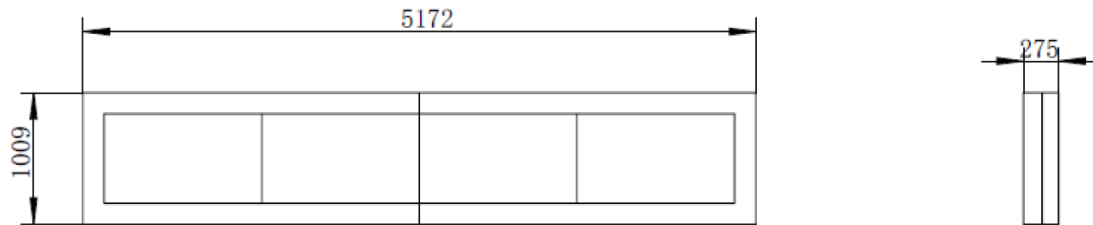
- Model 55inch Panel
- Resolution 1920*1080
- Brightness 500cd/m²
- Contrast Ratio 800 : 1
- Aspect Ratio 16:9
- Network 100M/1000M Ethernet
- Interface USB RJ45 HDMI
- Power consumption 1200W
- Dimension 5082*340*2000mm(L*W*H)
- Adapter Adapter, 12V/1.5A
- Other Video wall control box

#VideoWall #55inch 1*4

1*4 Video Wall Installation



Blue print



Specification

▪ Model	55inch Panel
▪ Resolution	1920*1080
▪ Brightness	500cd/m ²
▪ Contrast Ratio	800 :1
▪ Aspect Ratio	16:9
▪ Network	100M/1000M Ethernet
▪ Interface	USB RJ45 HDMI
▪ Power consumption	1200W
▪ Dimension	5172*275*1009mm(L*W*H)
▪ Adapter	Adapter, 12V/1.5A
▪ Other	Video wall control box

#VideoWall #FrontSideRepair #NoExtraSpaceNeed #49inch



Connectivity&Control

- Input Connection AV, Component, PC Analog, DVI
- Input Audio PC, DVI, AV, Component Audio
- Output Connection DVI, PC Analog, AV, Component Speaker Out 2Channel Speaker(8Ω) Comport (RS232C) 1/9 Pin Male T

LCD(QVW49A04)

- Resolution 1920x1080
- Brightness 450cd/m²
- Contrast Ratio 1300:1
- Bezel(One Side) R/B:1.2mm, U/L:2.3mm
- Viewing Angle 178° / 178° (Horizontal / Vertical)
- Lifetime 50,000Hours
- Power Consumption 220W
- Dimension 1,078.6 x 608.8 x 217.5 mm
- Weight 38kg
- Option Tempered glass, Camera, Touch

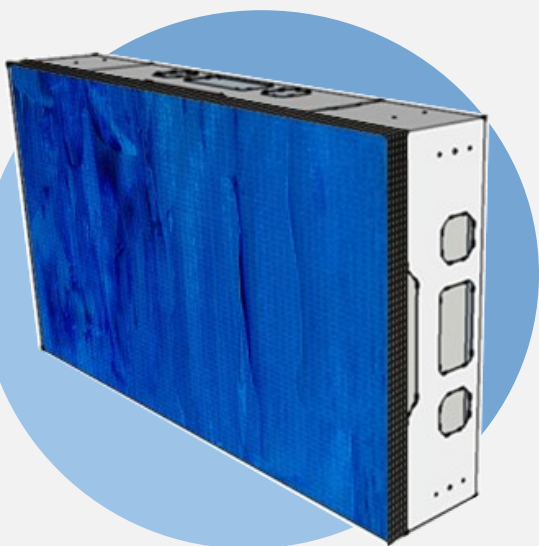
LCD (QVW49A04)

- Resolution 1920x1080
- Brightness 500cd m²
- Contrast Ratio 1400:1
- Bezel(One Side) R/B: 1.2mm, U/L:2.3mm
- Viewing Angle 178° / 178° (Horizontal / Vertical)
- Lifetime 60,000Hours
- Power Consumption 220W
- Dimension 1,076.6 x 606.8 x 217.5 mm
- Weight 38kg
- Option Tempered glass, Camera, Touch

LCD (QVW49A05)

- Resolution 1920x1080
- Brightness 700cd m²
- Contrast Ratio 1400:1
- Bezel(One Side) R/B:0.9mm, U/L:0.9mm
- Viewing Angle 178° / 178° (Horizontal / Vertical)
- Lifetime 60,000Hours
- Power Consumption 220W
- Dimension 1,076.6 x 606.8 x 216.5 mm
- Weight 38kg
- Option Tempered glass, Camera, Touch

#VideoWall #FrontSideRepair #NoExtraSpaceNeed #55inch



Connectivity&Control

- Input Connection AV, Component, PC Analog, DVI
- Input Audio PC, DVI, AV, Component Audio
- Output Connection DVI, PC Analog, AV, Component Speaker Out 2Channel Speaker(8Ω) Comport (RS232C) 1/9 Pin Male T

LCD(QVW55A03)

- Resolution 1920x1080
- Brightness 500cd m²
- Contrast Ratio 1400:1
- Bezel(One Side) R/B:1.25mm, U/L:2.25mm
- Viewing Angle 178° / 178° (Horizontal / Vertical)
- Lifetime 60,000Hours
- Power Consumption 220W
- Dimension 1,214.5 x 685.3 x 213.6 mm
- Weight 45kg
- Option Tempered glass, Camera, Touch

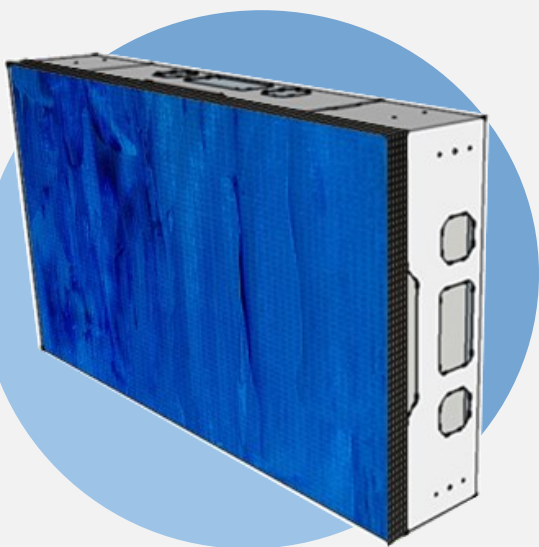
LCD (QVW55A04)

- Resolution 1920x1080
- Brightness 700cd m²
- Contrast Ratio 1400:1
- Bezel(One Side) R/B:1.25mm, U/L:2.25mm
- Viewing Angle 178° / 178° (Horizontal / Vertical)
- Lifetime 60,000Hours
- Power Consumption 220W
- Dimension 1,214.5 x 685.3 x 213.6 mm
- Weight 45kg
- Option Tempered glass, Camera, Touch

LCD (QVW55A05)

- Resolution 1920x1080
- Brightness 500cd m²
- Contrast Ratio 1400:1
- Bezel(One Side) R/B:0.9mm, U/L:0.9mm
- Viewing Angle 178° / 178° (Horizontal / Vertical)
- Lifetime 60,000Hours
- Power Consumption 220W
- Dimension 1,212.8 x 683.6 x 213.6 mm
- Weight 43kg
- Option Tempered glass, Camera, Touch

#VideoWall #FrontSideRepair #NoExtraSpaceNeed #55inch



LCD (QVW55A06)

- Resolution 1920x1080
- Brightness 700cd m²
- Contrast Ratio 1400:1
- Bezel(One Side) R/B:0.9mm, U/L:0.9mm
- Viewing Angle 178° / 178° (Horizontal / Vertical)
- Lifetime 60,000Hours
- Power Consumption 220W
- Dimension 1,212.8 x 683.6 x 213.6 mm
- Weight 43kg
- Option Tempered glass, Camera, Touch

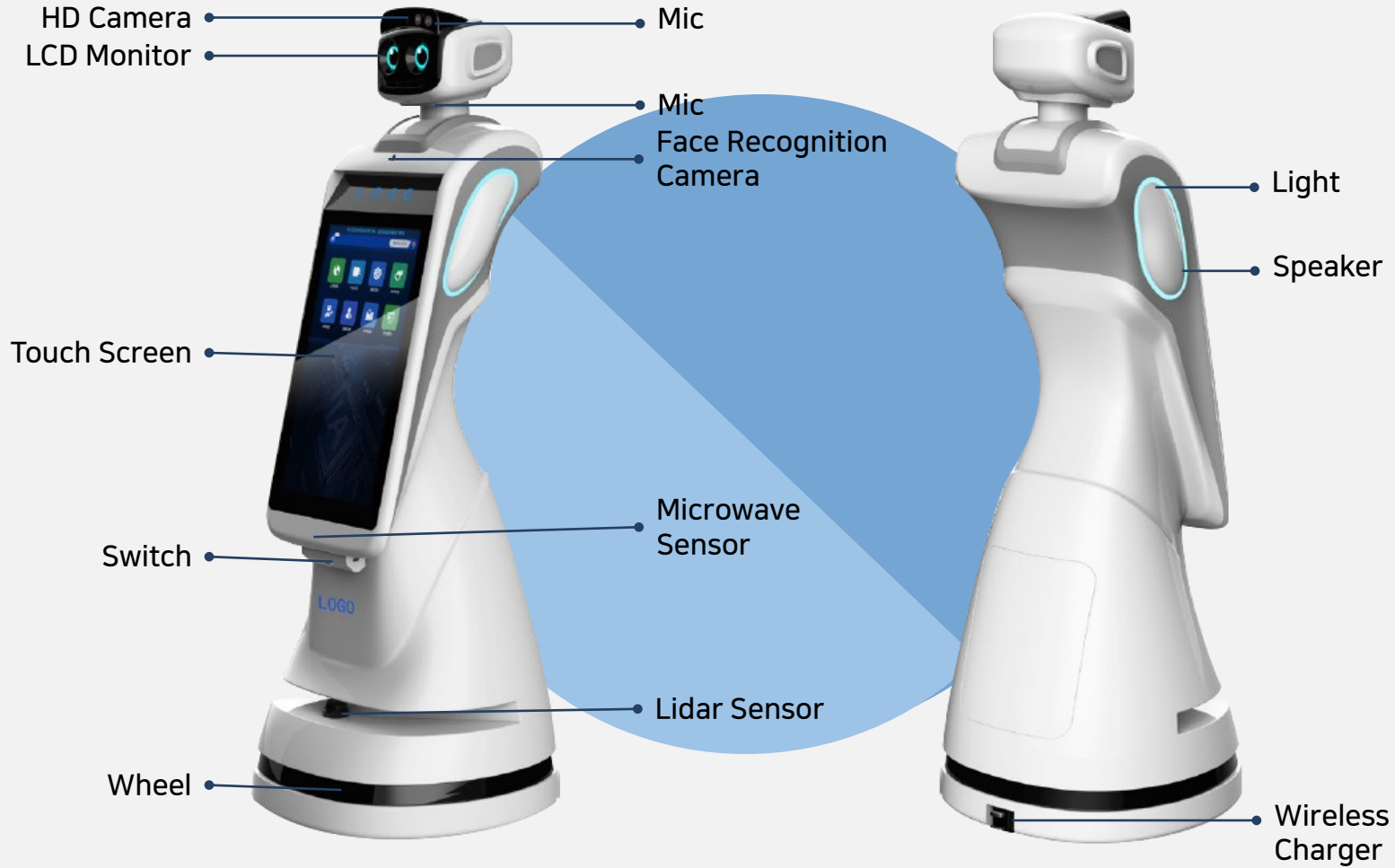
LCD (QVW55A07)

- Resolution 1920x1080
- Brightness 700cd m²
- Contrast Ratio 3500:1
- Bezel(One Side) R/B:0.9mm, U/L:0.9mm
- Viewing Angle 178° / 178° (Horizontal / Vertical)
- Lifetime 50,000Hours
- Power Consumption 220W
- Dimension 1,212.8 x 683.6 x 213.6 mm
- Weight 43kg
- Option Tempered glass, Camera, Touch

HARDWARE K
ROBOT



#SpeechRecognition #BuildingGuide #FaceRecognition #AutonomousAvoidance



Detailed Specification

SORT	STANDARD	PREMIUM
SIZE	L590*W590*H1590	
WEIGHT	60KG	
MATERIAL	ABS parts, Reinforced fiber plastic housing	
RATED POWER	80W	
AMBIENT LIGHT	Side Arm *2	
SPEAKER	15W WiFi Inner Speaker	
MIC	AIUI MIC: Recognition Range : Max 5M, Angle : 0-180 °, Noise Cancel	
CAMERA	Face Recogniton Camera Vertical, Horizontal Angle of field : 125 ° Backlight protection, Resoltuion 300 million pixels	
	-	3D Motion Detecting Camera
SCREEN	23.6inch PCAP Touch Screen 1920*1080P LCD Screen(Eyes) 320*240	
MOVING	Head: Horizontal Turning Angle : ± 40 ° Vertical Turning Angle : ± 10 ° Drivable Slope Angle : ± 3 ° (※ Can't stay at a slope) Max Velocity: ≤1m / s	
PERIPHERALS	-	58mm Printer
	-	NFC
	-	QR Scanner
BATTERY	24V 30Ah, Driving: 10H, Full Charge: 4H	

SORT	STANDARD	PREMIUM
SENSOR	Ultrasonic Wave Sensor*2: Scan Distance : 1900mm Angle(All-Direction) : ± 30 ° Object Detecting Sensor*2: Scan Distance : 5M, Angle : ± 45 °	
CHARGE	Voltage : 200-240VAC, Current : 6A	
SYSTEM	Android5.1	
CPU	RK3368	
INTERNET	WIFI 2.4G/5G	
RAM	DDR4_2400 4G	
SSD	128G	
NAVIGATION	Viewing Angle : 360 ° Detect Blind Spot: 0.1m Detect Resolution : 3cm Data Speed : 256000bps Working Distance : White Object : 40 M Black Object : 10 M Accuration : ± 5cm * Voltage : 5V Current: 3W Working Temperature : 25 ° C	Viewing Angle : 270 ° Working Distance : 0.05 ~ 10M Response : 67ms System Error : ± 60mm Statistic Error : ± 20 mm Voltage : 0 V DC-28 V DC Current: 3W Level : IP 65
AVOIDANCE SYSTEM	Lidar : Distance : 0.05 ~ 8M, Angle : 270 ° Ultrasonic Wave Sensor*2: Distance : 1900mm, Angle(All-Derection) : ± 30 °	
DEVELOPMENT	API, SDK	

#SpeechRecognition #BuildingGuide #FaceRecognition #AutonomousAvoidance



Specificaiton

- | | |
|--------------------|------------------|
| ▪ Size | L540*W470*H1400 |
| ▪ Speed | 0~0.7m/s |
| ▪ Endurance Time | ≥ 10h |
| ▪ Charging Time | ≤ 10h |
| ▪ Screen Size | 23.8 inch |
| ▪ Battery Capacity | 40Ah |
| ▪ Control System | Android |
| ▪ Camera | Face Recognition |
| ▪ Navigation Mode | Laser Navigation |
| ▪ Power | 120W |

#SpeechRecognition #BuildingGuide #FaceRecognition #AutonomousAvoidance



Specificaiton

▪ Size	L544*W530*H1358
▪ Net Weight	31kg
▪ Endurance Time	≥ 10h
▪ Charging Time	≤ 10h
▪ Screen Size	23.8 inch
▪ Battery Capacity	40Ah
▪ Control System	Android
▪ Camera	Face Recognition
▪ Navigation Mode	Laser Navigation
▪ Power	120W

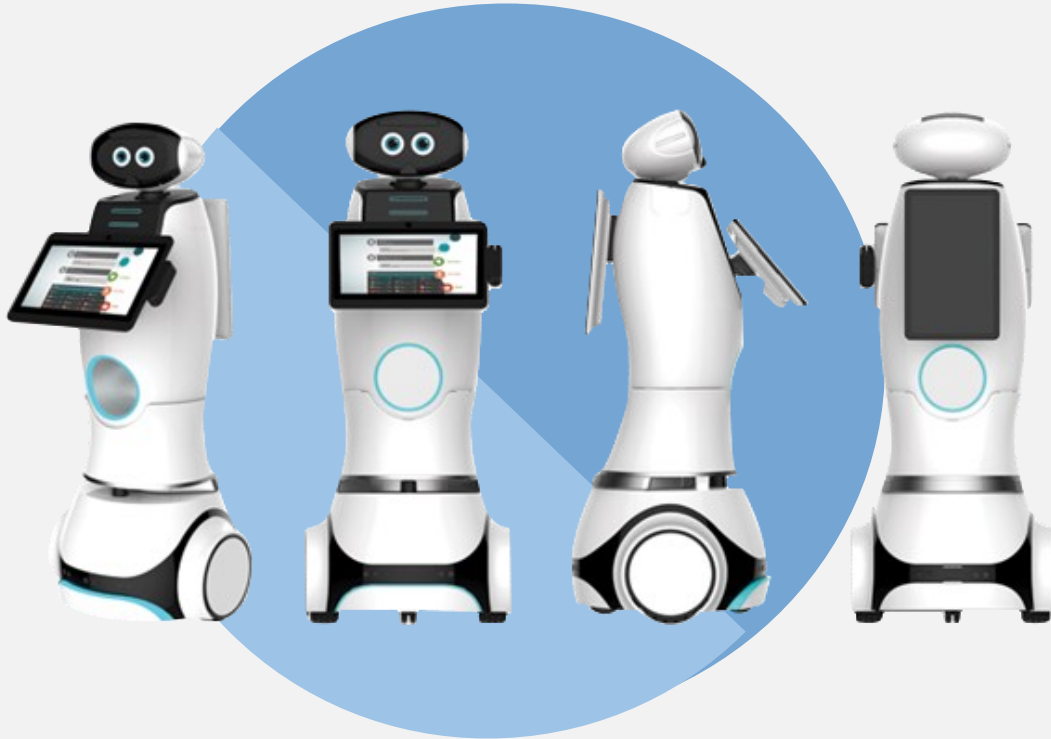
#SpeechRecognition #BuildingGuide #FaceRecognition #AutonomousAvoidance



Specifacaiton

- | | |
|--------------------|------------------|
| ▪ Size | L560*H1465 |
| ▪ Net Weight | 85kg |
| ▪ Endurance Time | ≥ 8-9h |
| ▪ Charging Time | ≤ 6h |
| ▪ Screen Size | 21.5 + 12.5 inch |
| ▪ Battery Capacity | 40Ah |
| ▪ Control System | Android |
| ▪ Camera | Face Recognition |
| ▪ Navigation Mode | Laser Navigation |
| ▪ Power | 120W |

#SpeechRecognition #BuildingGuide #FaceRecognition #AutonomousAvoidance



Specifcaiton

- | | |
|--------------------|------------------|
| ▪ Size | L544*W530*H1358 |
| ▪ Net Weight | 50kg |
| ▪ Endurance Time | ≥ 8-9h |
| ▪ Charging Time | ≤ 6h |
| ▪ Screen Size | 21.5 + 12.5 inch |
| ▪ Battery Capacity | 40Ah |
| ▪ Control System | Android |
| ▪ Camera | Face Recognition |
| ▪ Navigation Mode | Laser Navigation |
| ▪ Power | 120W |

#SpeechRecognition #BuildingGuide #FaceRecognition #AutonomousAvoidance



Specificaiton

▪ Size	L544*W530*H1358
▪ Net Weight	50kg
▪ Endurance Time	≥ 8-9h
▪ Charging Time	≤ 6h
▪ Screen Size	21.5 inch
▪ Battery Capacity	40Ah
▪ Control System	Android
▪ Camera	Face Recognition
▪ Navigation Mode	Laser Navigation
▪ Power	120W

#SpeechRecognition #BuildingGuide #FaceRecognition #AutonomousAvoidance



Specificaiton

▪ Size	L544*W530*H1358
▪ Net Weight	50kg
▪ Endurance Time	≥ 8-9h
▪ Charging Time	≤ 6h
▪ Screen Size	21.5 +12.5 inch
▪ Battery Capacity	40Ah
▪ Control System	Android
▪ Camera	Face Recognition
▪ Navigation Mode	Laser Navigation
▪ Power	120W

#SpeechRecognition #BuildingGuide #FaceRecognition #AutonomousAvoidance



Specificaion

- | | |
|--------------------|------------------|
| ▪ Size | L680*W570*H1500 |
| ▪ Net Weight | 65kg |
| ▪ Endurance Time | ≥ 8-9h |
| ▪ Charging Time | ≤ 4~5h |
| ▪ Screen Size | 10.1+21.5 inch |
| ▪ Battery Capacity | 20Ah |
| ▪ Control System | Android |
| ▪ Camera | Face Recognition |
| ▪ Navigation Mode | Laser Navigation |
| ▪ Power | 80W |



THANK YOU

For more information, visit
<http://www.netds.net>